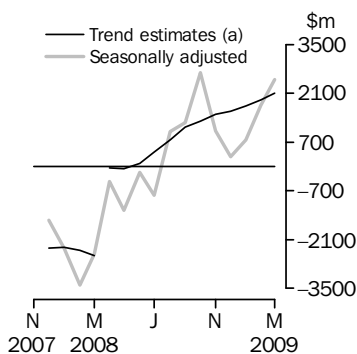


INTERNATIONAL TRADE IN GOODS AND SERVICES

AUSTRALIA

EMBARGO: 11.30AM (CANBERRA TIME) WED 6 MAY 2009

Balance on Goods and Services



(a) A trend break of \$2,725m has been applied to April 2008.

KEY FIGURES

| | January 2009 | February 2009 | March 2009 | Feb 09 to Mar 09 % |
|--|-----------------|------------------|---------------|-----------------------------|
| | \$m | \$m | \$m | change |
| BALANCE ON GOODS AND SERVICES | | | | |
| Trend estimates | 1 739 | 1 915 | 2 108 | 10 |
| Seasonally adjusted | 765 | 1 752 | 2 498 | 43 |
| CREDITS (Exports of goods & services) | | | | |
| Trend estimates | 24 931 | 24 519 | 24 139 | -2 |
| Seasonally adjusted | 23 682 | 24 631 | 24 647 | — |
| DEBITS (Imports of goods & services) | | | | |
| Trend estimates | 23 192 | 22 604 | 22 031 | -3 |
| Seasonally adjusted | 22 918 | 22 879 | 22 149 | -3 |

— nil or rounded to zero (including null cells)

KEY POINTS

BALANCE ON GOODS AND SERVICES

- The trend estimate of the *balance on goods and services* was a surplus of \$2,108m in March 2009, an increase of \$193m on a revised surplus in February 2009.
- In seasonally adjusted terms, the *balance on goods and services* was a surplus of \$2,498m in March 2009, an increase of \$746m on a revised surplus in February 2009.
- The increase in the seasonally adjusted surplus was primarily due to the fall in *goods and services debits*, mainly in *other goods* and *capital goods*.

CREDITS (EXPORTS OF GOODS & SERVICES)

- Seasonally adjusted, *goods and services credits* rose \$16m to \$24,647m. *Rural goods* rose \$257m (10%) while *other goods* fell \$139m (6%) and *non-rural goods* fell \$126m (1%). *Services credits* rose \$25m (1%).
- The rise in *rural goods* was largely driven by the *cereal grains and cereal preparations component*, which rose \$249m (41%).

DEBITS (IMPORTS OF GOODS & SERVICES)

- Seasonally adjusted, *goods and services debits* fell \$730m (3%) to \$22,149m. *Other goods* fell \$640m (33%), *capital goods* fell \$563m (12%) and *intermediate and other merchandise goods* fell \$207m (3%), while *consumption goods* rose \$661m (15%). *Services debits* rose \$19m.
- The fall in *other goods* was driven by *non-monetary gold*, down \$806m (46%).
- The components in *consumption goods* with the largest increases were *consumption goods n.e.s.*, up \$206m (13%), *textiles, clothing and footwear*, up \$134m (21%) and *non-industrial transport equipment*, up \$104m (13%).

INQUIRIES

For further information contact Selvi Sekhar on Canberra (02) 6252 5540 for goods, and Karen McGuigan on Canberra (02) 6252 5415 for services.

NOTES

FORTHCOMING ISSUES

| ISSUE | RELEASE DATE |
|----------------|------------------|
| April 2009 | 4 June 2009 |
| May 2009 | 2 July 2009 |
| June 2009 | 5 August 2009 |
| July 2009 | 3 September 2009 |
| August 2009 | 6 October 2009 |
| September 2009 | 5 November 2009 |

.....

REVISIONS

Revisions have been made to incorporate the latest available data relating to merchandise trade and international trade in services. In original terms, these revisions have:

- decreased the surplus on goods and services for February 2009 by \$356m
- increased the surplus for the eight months to February 2009 by \$124m
- increased the deficit on goods and services for 2007–08 by \$238m, with:
 - goods credits decreasing by \$242m
 - goods debits decreasing by \$4m.

CHANGES TO INFORMATION PAPER

The *Information paper: Changes to international trade in goods industry statistics, July 2009* (cat. no. 5368.0.55.011) released on 18 December 2008 described changes to industry statistics being implemented in the July 2009 issue of this publication. Available with the information paper were correspondences between the relevant industry and commodity classifications. Since the release of the information paper one change has been made to the correspondences in Tables 1 and 2 and one industry code has been removed from Table 5. The updated tables are available from the Downloads tab of the information paper.

AVAILABILITY OF RELATED DATA

Commentary summarising the country breakdown for Australia's major trading partners for the calendar year 2008 will not be available in this issue due to the delay in the release of services calendar year data. As advised in the February 2009 issue, the services time series data cube Table 9 is available in this issue but other related data cubes will be released on 17 June 2009 (not 19 June as previously advised).

INFORMATION PAPER

The *Information paper: Revisions to international standards in monthly international trade in goods and services statistics from August 2009* (cat. no. 5368.0.55.012) will be released on 4 June 2009. This paper outlines the changes to the international standards and the impact on the presentation of statistics in *International Trade in Goods and Services, Australia* (cat. no. 5368.0). It also describes the background to the changes, timing of the proposed changes and provides mock-ups of the proposed publications and the related spreadsheets.

Brian Pink
Australian Statistician

CONTENTS

page

| | |
|----------------------------|---|
| Time series data | 4 |
|----------------------------|---|

ANALYSIS

| | |
|---------------------------------|---|
| Analysis and comments | 5 |
|---------------------------------|---|

TABLES

INTERNATIONAL TRADE IN GOODS AND SERVICES – BALANCE OF PAYMENTS BASIS

| | |
|---|----|
| 1 Goods and services, summary, seasonally adjusted and trend estimates | 9 |
| 2 Goods and services, summary, original | 10 |
| 3 Goods credits, original | 11 |
| 4 Goods debits, original | 12 |
| 5 Goods credits, seasonally adjusted | 13 |
| 6 Goods debits, seasonally adjusted | 14 |
| 7 Goods credits, trend estimates | 15 |
| 8 Goods debits, trend estimates | 16 |
| 9 Services, summary, original | 17 |
| 10 Services, summary, seasonally adjusted and trend estimates | 18 |
| 11 Services, original, quarterly | 19 |

INTERNATIONAL MERCHANDISE TRADE – RECORDED TRADE BASIS

| | |
|--|----|
| 12 International merchandise exports, by commodity | 20 |
| 13 International merchandise imports, by commodity | 23 |
| 14 International merchandise trade, by country and country groups | 26 |
| 15 International merchandise trade, by state | 27 |

OTHER TABLES

| | |
|---|----|
| 16 Period average exchange rates per Australian dollar | 28 |
|---|----|

OTHER INFORMATION

| | |
|---------------------------------------|----|
| Explanatory Notes | 29 |
| Appendix – Related articles | 34 |

TIME SERIES DATA

TIME SERIES DATA

Data available free on the ABS web site include longer time series of tables in this publication and the additional spreadsheets and data cubes listed below.

- 31 Merchandise exports by Broad Economic Category (BEC)
- 32 Merchandise exports by industry of origin (ANZSIC)
- 33 Merchandise imports by Broad Economic Category (BEC)
- 34 Merchandise imports by Balance of Payments Broad Economic Category (BoPBEC)
- 35 Merchandise imports by industry of origin (ANZSIC)
- 36 Merchandise exports, state by country and country groups
- 37 Merchandise imports, state by country and country groups
- 91 Monthly seasonal adjustment factors and forward factors for 12 months.

TRADE IN SERVICES DATA CUBES

Trade in Services data are usually updated on an annual basis - with the March issue of 5368.0 for calendar year and with the September issue for financial year. However, tables 1 to 8, 10 and 11 for the 2008 calendar year will be released on 17 June 2009. Table 9 is released with the March issue.

For financial year data cubes see cat. no. 5368.0.55.003 and for calendar year see 5368.0.55.004. The following tables are included in both sets of data cubes:

- 1 International trade in services, credits, state by year
- 2 International trade in services, credits, year by state
- 3 International trade in services, debits, state by year
- 4 International trade in services, debits, year by state
- 5 International trade in services, credits, year by country and service
- 6 International trade in services, credits, service by year and by country
- 7 International trade in services, debits, year by country and service
- 8 International trade in services, debits, service by year and by country
- 9 International trade in services, year by detailed service
- 10 International trade in services, credits, year by country and travel service
- 11 International trade in services, debits, year by country and travel service.

ANALYSIS AND COMMENTS

BALANCE ON GOODS AND SERVICES

The trend estimate of the balance on goods and services was a surplus of \$2,108m in March 2009, an increase of \$193m on a revised surplus in February 2009.

In seasonally adjusted terms, the balance on goods and services was a surplus of \$2,498m in March 2009, an increase of \$746m on a revised surplus in February 2009.

The sum of the seasonally adjusted balances for the three months to March 2009 was a surplus of \$5,015m, an increase of \$1,034m on the surplus of \$3,981m for the three months to December 2008. However, if the seasonal factors used in compiling quarterly Balance of Payments are applied, the March quarter 2009 surplus was \$5,050m, an increase of \$879m on the revised December quarter 2008 surplus of \$4,171m.

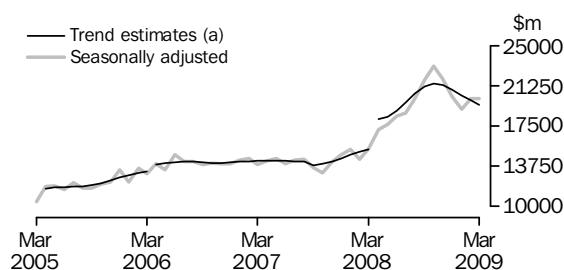
EXPORTS OF GOODS AND SERVICES

The trend estimate of goods and services credits fell \$380m (2%) between February 2009 and March 2009 to \$24,139m.

In seasonally adjusted terms, goods and services credits rose \$16m to \$24,647m. Rural goods rose \$257m (10%) while other goods fell \$139m (6%) and non-rural goods fell \$126m (1%). Services credits rose \$25m (1%).

Exports of goods

GOODS CREDITS



(a) Trend breaks of \$819m to April 2005, \$500m to April 2006 and \$2,725m to April 2008 have been applied.

RURAL GOODS

In trend terms, exports of rural goods rose \$53m (2%) to \$2,697m.

In seasonally adjusted terms, exports of rural goods rose \$257m (10%) to \$2,844m.

The main component contributing to the rise in the seasonally adjusted estimates was cereal grains and cereal preparations, up \$249m (41%).

In original terms, exports of rural goods rose \$467m (19%) to \$2,985m.

NON-RURAL GOODS

In trend terms, exports of non-rural goods fell \$603m (4%) to \$14,589m.

In seasonally adjusted terms, exports of non-rural goods fell \$126m (1%) to \$14,842m.

The main components contributing to the fall in seasonally adjusted estimates were:

- coal, coke and briquettes, down \$210m (5%)
- other mineral fuels, down \$98m (6%).

Partly offsetting these decreases were:

- other non-rural, up \$115m (13%)
- transport equipment, up \$64m (18%).

ANALYSIS AND COMMENTS *continued*

Exports of goods *continued*

NON-RURAL GOODS *continued*

In original terms, the largest increase was in metal ores and minerals, up \$354m (8%) with non-agglomerated iron ore, up \$259m (9%), with volumes up 19% and prices down 8%. Coal, coke and briquettes rose \$212m (5%) with volumes of high rank coal up 21%, volumes of semi-soft coking coal up 67% and volumes of non-metallurgical coal up 2%.

In original terms, exports of non-rural goods rose \$1,158m (8%) to \$14,826m.

OTHER GOODS

In trend terms, exports of other goods rose \$145m (7%) to \$2,215m.

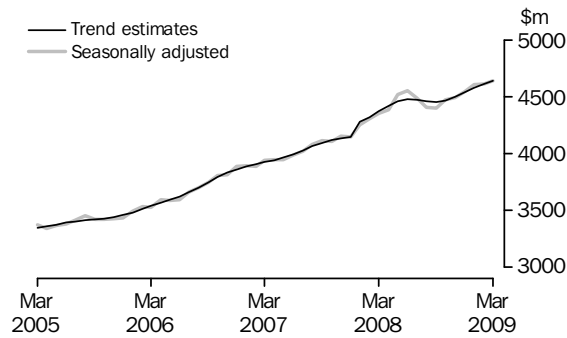
In seasonally adjusted terms, other goods fell \$139m (6%) to \$2,327m.

The main component contributing to the fall in seasonally adjusted estimates was non-monetary gold, down \$108m (5%).

In original terms, exports of other goods fell \$132m (5%) to \$2,327m.

Exports of services

SERVICES CREDITS



In trend terms, services credits rose \$26m (1%) to \$4,638m.

In seasonally adjusted terms, services credits rose \$25m (1%) to \$4,635m.

The components contributing to the rise in the seasonally adjusted estimates were travel services, up \$32m (1%) and other services up \$5m, while transportation services fell \$13m (2%).

In seasonally adjusted terms, tourism related services credits rose \$24m (1%) to \$2,973m.

IMPORTS OF GOODS AND SERVICES

The trend estimate of goods and services debits fell \$573m (3%) between February 2009 and March 2009 to \$22,031m.

In seasonally adjusted terms, goods and services debits fell \$730m (3%) to \$22,149m.

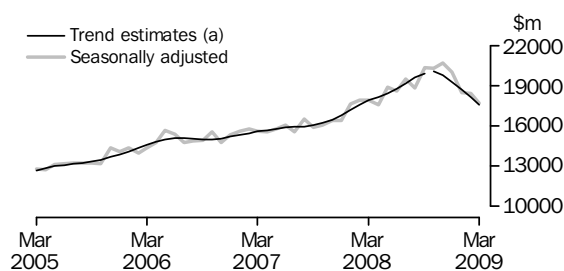
Other goods fell \$640m (33%), capital goods fell \$563m (12%) and intermediate and other merchandise goods fell \$207m (3%), while consumption goods rose \$661m (15%). Services debits rose \$19m.

IMPORTS OF GOODS AND SERVICES *continued*

Preliminary analysis shows that, in seasonally adjusted terms, goods imports volumes decreased about 8.7% during the March quarter 2009 and the implicit price deflator fell 2.2%. In original terms, the Chain Laspeyres price index fell about 2.9% while the implicit price deflator fell 1.7%. The final volume and price outcomes will be published in the March quarter 2009 issue of *Balance of Payments and International Investment Position, Australia* (cat. no. 5302.0).

Imports of goods

GOODS DEBITS



(a) A trend break of \$167m has been applied to Capital goods, n.e.s. debits and related aggregates in October 2008.

CONSUMPTION GOODS

In trend terms, imports of consumption goods fell \$77m (2%) to \$4,953m.

In seasonally adjusted terms, imports of consumption goods rose \$661m (15%) to \$5,146m.

All components contributed to the rise in the seasonally adjusted estimates with:

- consumption goods n.e.s., up \$206m (13%)
- textiles, clothing and footwear, up \$134m (21%)
- non-industrial transport equipment, up \$104m (13%).

In original terms, imports of consumption goods rose \$897m (22%) to \$4,944m.

CAPITAL GOODS

In trend terms, imports of capital goods fell \$73m (2%) to \$4,097m.

In seasonally adjusted terms, imports of capital goods fell \$563m (12%) to \$4,223m.

The component contributing the most to the fall in the seasonally adjusted estimates was capital goods n.e.s. (which includes civil aircraft and confidential commodities), down \$732m (45%).

Partly offsetting this fall was the machinery and industrial equipment component, up \$202m (13%).

In original terms, imports of capital goods rose \$195m (5%) to \$4,349m.

ANALYSIS AND COMMENTS *continued*

Imports of goods continued

INTERMEDIATE AND OTHER MERCHANDISE GOODS

In trend terms, imports of intermediate and other merchandise goods fell \$438m (6%) to \$7,006m.

In seasonally adjusted terms, imports of intermediate and other merchandise goods fell \$207m (3%) to \$7,006m.

The main components contributing to the decrease in the seasonally adjusted estimates were:

- fuels and lubricants, down \$188m (10%)
- iron and steel, down \$127m (28%).

Partly offsetting these decreases was the other parts for capital goods component, up \$76m (7%).

In original terms, imports of intermediate and other merchandise goods rose \$329m (5%) to \$7,056m.

OTHER GOODS

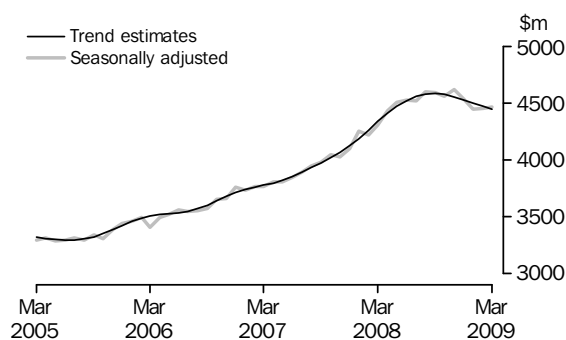
In trend terms, imports of other goods rose \$34m (2%) to \$1,525m.

In both original and seasonally adjusted terms, other goods debits fell \$640m (33%) to \$1,305m.

The main component contributing to this decrease was non-monetary gold, down \$806m (46%) while goods for processing increased \$165m.

Imports of services

SERVICES DEBITS



In trend terms, services debits fell \$21m to \$4,449m.

In seasonally adjusted terms, services debits rose \$19m to \$4,469m.

The main component contributing to the rise in the seasonally adjusted estimates was other services, up \$15m (1%).

In seasonally adjusted terms, tourism related services debits rose \$3m to \$2,062m.

GOODS AND SERVICES(a), Summary: Seasonally Adjusted and Trend Estimates

| Months | BALANCE | CREDITS | | | | | DEBITS | | | | | |
|---------------------|-----------------------|--------------------------|-------------|----------------|------------------------------|----------------|--------------------------|-------------|--------------------|---------------|-------------------------------|----------------|
| | On goods and services | Total goods and services | Total goods | Rural goods(b) | Non-rural and other goods(b) | Total services | Total goods and services | Total goods | Con-sumption goods | Capital goods | Inter-mediate and other goods | Total services |
| | \$m | \$m | \$m | \$m | \$m | \$m | \$m | \$m | \$m | \$m | \$m | \$m |
| SEASONALLY ADJUSTED | | | | | | | | | | | | |
| 2008 | | | | | | | | | | | | |
| January | -2 330 | 19 558 | 15 303 | 2 147 | 13 156 | 4 255 | -21 888 | -17 633 | -5 121 | -3 778 | -8 734 | -4 255 |
| February | -3 401 | 18 723 | 14 417 | 2 126 | 12 290 | 4 306 | -22 124 | -17 902 | -5 173 | -4 059 | -8 669 | -4 222 |
| March | -2 510 | 19 725 | 15 372 | 2 219 | 13 153 | 4 353 | -22 234 | -17 930 | -5 170 | -4 179 | -8 581 | -4 305 |
| April | -438 | 21 561 | 17 178 | 2 401 | 14 777 | 4 383 | -21 999 | -17 568 | -4 904 | -3 774 | -8 891 | -4 430 |
| May | -1 249 | 22 160 | 17 640 | 2 395 | 15 245 | 4 519 | -23 408 | -18 900 | -5 243 | -3 878 | -9 780 | -4 508 |
| June | -163 | 22 969 | 18 417 | 2 249 | 16 168 | 4 552 | -23 131 | -18 605 | -5 209 | -4 148 | -9 247 | -4 527 |
| July | -815 | 23 200 | 18 717 | 2 219 | 16 498 | 4 483 | -24 015 | -19 498 | -5 145 | -4 030 | -10 323 | -4 517 |
| August | 1 012 | 24 448 | 20 043 | 2 292 | 17 750 | 4 406 | -23 436 | -18 839 | -5 050 | -4 246 | -9 544 | -4 597 |
| September | 1 274 | 26 184 | 21 787 | 2 260 | 19 527 | 4 397 | -24 910 | -20 319 | -5 104 | -4 433 | -10 783 | -4 591 |
| October | 2 684 | 27 528 | 23 058 | 2 569 | 20 489 | 4 470 | -24 844 | -20 289 | -5 238 | -4 463 | -10 588 | -4 556 |
| November | 1 017 | 26 345 | 21 853 | 2 488 | 19 366 | 4 492 | -25 328 | -20 711 | -5 338 | -4 427 | -10 946 | -4 617 |
| December | 280 | 24 825 | 20 279 | 2 540 | 17 739 | 4 546 | -24 545 | -20 015 | -5 438 | -5 255 | -9 322 | -4 530 |
| 2009 | | | | | | | | | | | | |
| January | 765 | 23 682 | 19 076 | 2 496 | 16 580 | 4 607 | -22 918 | -18 473 | -5 166 | -4 472 | -8 836 | -4 444 |
| February | 1 752 | 24 631 | 20 021 | 2 587 | 17 434 | 4 610 | -22 879 | -18 429 | -4 485 | -4 786 | -9 158 | -4 450 |
| March | 2 498 | 24 647 | 20 012 | 2 844 | 17 169 | 4 635 | -22 149 | -17 680 | -5 146 | -4 223 | -8 311 | -4 469 |
| TREND ESTIMATES | | | | | | | | | | | | |
| 2008 | | | | | | | | | | | | |
| January | -2 310 | 19 072 | 14 790 | 2 128 | 12 662 | 4 282 | -21 381 | -17 192 | -5 040 | -3 857 | -8 295 | -4 189 |
| February | -2 413 | 19 416 | 15 097 | 2 202 | 12 895 | 4 319 | -21 830 | -17 568 | -5 094 | -3 921 | -8 553 | -4 262 |
| March | -2 547 | 19 688 | 15 317 | 2 262 | 13 055 | 4 370 | -22 235 | -17 897 | -5 117 | -3 960 | -8 820 | -4 337 |
| April(c) | -45 | 22 531 | 18 110 | 2 293 | 15 817 | 4 422 | -22 577 | -18 167 | -5 109 | -3 978 | -9 080 | -4 410 |
| May | -70 | 22 827 | 18 368 | 2 298 | 16 070 | 4 460 | -22 898 | -18 426 | -5 083 | -4 002 | -9 341 | -4 471 |
| June | 94 | 23 367 | 18 891 | 2 294 | 16 597 | 4 476 | -23 274 | -18 754 | -5 060 | -4 058 | -9 636 | -4 520 |
| July | 409 | 24 141 | 19 669 | 2 298 | 17 371 | 4 472 | -23 732 | -19 175 | -5 065 | -4 140 | -9 970 | -4 557 |
| August | 768 | 24 963 | 20 504 | 2 317 | 18 187 | 4 458 | -24 194 | -19 614 | -5 117 | -4 232 | -10 265 | -4 580 |
| September | 1 126 | 25 615 | 21 164 | 2 355 | 18 809 | 4 452 | -24 489 | -19 903 | -5 183 | -4 296 | -10 424 | -4 586 |
| October(d) | 1 302 | 25 926 | 21 462 | 2 411 | 19 051 | 4 464 | -24 624 | -20 048 | -5 226 | -4 444 | -10 378 | -4 576 |
| November | 1 508 | 25 813 | 21 317 | 2 475 | 18 842 | 4 496 | -24 306 | -19 751 | -5 227 | -4 387 | -10 137 | -4 555 |
| December | 1 592 | 25 405 | 20 866 | 2 533 | 18 332 | 4 539 | -23 812 | -19 286 | -5 184 | -4 346 | -9 756 | -4 526 |
| 2009 | | | | | | | | | | | | |
| January | 1 739 | 24 931 | 20 352 | 2 589 | 17 763 | 4 579 | -23 192 | -18 695 | -5 111 | -4 254 | -9 330 | -4 497 |
| February | 1 915 | 24 519 | 19 906 | 2 644 | 17 262 | 4 612 | -22 604 | -18 134 | -5 030 | -4 170 | -8 935 | -4 470 |
| March | 2 108 | 24 139 | 19 501 | 2 697 | 16 804 | 4 638 | -22 031 | -17 582 | -4 953 | -4 097 | -8 531 | -4 449 |

(a) For sign conventions, see paragraph 11 of the Explanatory Notes.

(b) For all time periods, estimates for sugar, sugar preparations and honey are included in Non-rural and other goods.

(c) A trend break of \$2,725m has been applied to Non-rural and other goods credits and related aggregates in April 2008.

(d) A trend break of \$167m has been applied to Capital goods, n.e.s. debits and related aggregates in October 2008.

GOODS AND SERVICES(a), Summary: Original

| | BALANCE | CREDITS | | | | | DEBITS | | | | | |
|------------------------|------------------------------|---------------------------------|--------------------|-----------------------|-------------------------------------|-----------------------|---------------------------------|--------------------|--------------------------|----------------------|-------------------------------------|-----------------------|
| | <i>On goods and services</i> | <i>Total goods and services</i> | <i>Total goods</i> | <i>Rural goods(b)</i> | <i>Non-rural and other goods(b)</i> | <i>Total services</i> | <i>Total goods and services</i> | <i>Total goods</i> | <i>Consumption goods</i> | <i>Capital goods</i> | <i>Intermediate and other goods</i> | <i>Total services</i> |
| | \$m | \$m | \$m | \$m | \$m | \$m | \$m | \$m | \$m | \$m | \$m | \$m |
| FINANCIAL YEAR | | | | | | | | | | | | |
| 2005-06 | -14 520 | 196 274 | 154 425 | 25 266 | 129 159 | 41 849 | -210 794 | -169 716 | -50 221 | -40 077 | -79 418 | -41 078 |
| 2006-07 | -12 757 | 215 695 | 169 514 | 25 075 | 144 439 | 46 181 | -228 452 | -184 024 | -54 913 | -41 765 | -87 346 | -44 428 |
| 2007-08 | -21 508 | 233 835 | 182 816 | 25 480 | 157 336 | 51 019 | -255 343 | -205 089 | -59 371 | -45 351 | -100 367 | -50 254 |
| MONTHS | | | | | | | | | | | | |
| 2008 | | | | | | | | | | | | |
| January | -3 828 | 17 736 | 13 562 | 1 829 | 11 733 | 4 174 | -21 564 | -17 113 | -4 844 | -3 526 | -8 743 | -4 451 |
| February | -2 480 | 18 222 | 13 747 | 2 137 | 11 610 | 4 475 | -20 702 | -16 885 | -4 812 | -3 640 | -8 433 | -3 817 |
| March | -1 017 | 20 061 | 15 537 | 2 370 | 13 167 | 4 524 | -21 078 | -17 007 | -4 594 | -4 120 | -8 293 | -4 071 |
| April | -987 | 21 159 | 16 711 | 2 432 | 14 279 | 4 448 | -22 146 | -17 850 | -4 958 | -3 748 | -9 144 | -4 296 |
| May | -452 | 22 477 | 18 104 | 2 626 | 15 478 | 4 373 | -22 929 | -18 608 | -5 016 | -3 821 | -9 771 | -4 321 |
| June | 137 | 22 652 | 18 428 | 2 172 | 16 256 | 4 224 | -22 515 | -17 912 | -4 769 | -4 224 | -8 919 | -4 603 |
| July | -1 023 | 23 413 | 18 858 | 2 149 | 16 709 | 4 555 | -24 436 | -19 764 | -5 284 | -4 048 | -10 432 | -4 672 |
| August | 1 832 | 25 170 | 20 662 | 2 288 | 18 374 | 4 508 | -23 338 | -18 771 | -5 073 | -4 208 | -9 490 | -4 567 |
| September | -176 | 26 008 | 21 786 | 2 217 | 19 569 | 4 222 | -26 184 | -21 210 | -5 578 | -4 555 | -11 077 | -4 974 |
| October | 1 899 | 28 940 | 24 314 | 2 677 | 21 637 | 4 626 | -27 041 | -22 203 | -6 134 | -4 809 | -11 260 | -4 838 |
| November | 621 | 26 466 | 21 903 | 2 506 | 19 397 | 4 563 | -25 845 | -21 409 | -5 790 | -4 756 | -10 863 | -4 436 |
| December | 506 | 25 625 | 21 115 | 2 610 | 18 505 | 4 510 | -25 119 | -20 382 | -5 528 | -5 515 | -9 339 | -4 737 |
| 2009 | | | | | | | | | | | | |
| January | -238 | 21 997 | 17 474 | 2 199 | 15 275 | 4 523 | -22 235 | -17 593 | -4 846 | -4 045 | -8 702 | -4 642 |
| February | 2 533 | 23 328 | 18 645 | 2 518 | 16 127 | 4 683 | -20 795 | -16 873 | -4 047 | -4 154 | -8 672 | -3 922 |
| March | 2 996 | 24 950 | 20 138 | 2 985 | 17 153 | 4 812 | -21 954 | -17 654 | -4 944 | -4 349 | -8 361 | -4 300 |
| FINANCIAL YEAR TO DATE | | | | | | | | | | | | |
| 9 months ended | | | | | | | | | | | | |
| March | | | | | | | | | | | | |
| 2008 | -20 206 | 167 547 | 129 573 | 18 250 | 111 323 | 37 974 | -187 753 | -150 719 | -44 628 | -33 558 | -72 533 | -37 034 |
| 2009 | 8 950 | 225 897 | 184 895 | 22 149 | 162 746 | 41 002 | -216 947 | -175 859 | -47 224 | -40 439 | -88 196 | -41 088 |

(a) For sign conventions, see paragraph 11 of the Explanatory Notes.

(b) For all time periods, estimates for sugar, sugar preparations and honey are included in Non-rural and other goods.

| | | | | | | | 9 MONTHS ENDED MARCH | | Change % |
|---|----------------|----------------|----------------|---------------|---------------|---------------|-------------------------|----------------|-------------|
| | 2005-06 | 2006-07 | 2007-08 | Jan 2009 | Feb 2009 | Mar 2009 | 2008 | 2009 | |
| | \$m | \$m | \$m | \$m | \$m | \$m | \$m | \$m | |
| Total goods credits | 154 425 | 169 514 | 182 816 | 17 474 | 18 645 | 20 138 | 129 573 | 184 895 | 42.7 |
| <i>Rural goods</i> | 25 266 | 25 075 | 25 480 | 2 199 | 2 518 | 2 985 | 18 250 | 22 149 | 21.4 |
| Meat and meat preparations | 6 709 | 7 078 | 6 540 | 391 | 627 | 687 | 4 752 | 5 733 | 20.6 |
| Cereal grains and cereal preparations | 4 852 | 4 171 | 4 976 | 620 | 687 | 927 | 3 147 | 4 995 | 58.7 |
| Wool and sheepskins | 2 544 | 3 065 | 2 796 | 130 | 205 | 227 | 2 140 | 1 798 | -16.0 |
| Other rural(a) | 11 161 | 10 761 | 11 168 | 1 058 | 999 | 1 144 | 8 211 | 9 623 | 17.2 |
| <i>Non-rural goods</i> | 118 210 | 131 813 | 143 138 | 13 631 | 13 668 | 14 826 | 100 698 | 146 691 | 45.7 |
| Metal ores and minerals | 28 934 | 35 315 | 41 337 | 4 013 | 4 231 | 4 585 | 28 626 | 41 467 | 44.9 |
| Coal, coke and briquettes | 24 352 | 21 928 | 24 599 | 4 520 | 3 970 | 4 182 | 15 300 | 45 166 | 195.2 |
| Other mineral fuels | 13 218 | 15 642 | 18 889 | 1 639 | 1 481 | 1 402 | 13 496 | 17 088 | 26.6 |
| Metals (excl. non-monetary gold) | 11 271 | 14 820 | 14 038 | 823 | 786 | 881 | 10 340 | 9 782 | -5.4 |
| Machinery | 8 066 | 8 422 | 8 792 | 513 | 724 | 787 | 6 600 | 6 935 | 5.1 |
| Transport equipment | 5 314 | 4 648 | 5 719 | 237 | 328 | 400 | 4 142 | 4 399 | 6.2 |
| Other manufactures | 14 996 | 16 268 | 17 000 | 1 123 | 1 370 | 1 563 | 12 570 | 13 507 | 7.5 |
| Other non-rural (incl. sugar and beverages) | 12 059 | 14 770 | 12 764 | 763 | 778 | 1 026 | 9 624 | 8 347 | -13.3 |
| <i>Other goods</i> | 10 949 | 12 626 | 14 198 | 1 644 | 2 459 | 2 327 | 10 625 | 16 055 | 51.1 |
| Goods for processing | 368 | 417 | 276 | 79 | 110 | 93 | 200 | 588 | 194.0 |
| Repairs on goods | 74 | 90 | 103 | 7 | 7 | 8 | 72 | 74 | 2.8 |
| Goods procured in ports by carriers | 1 420 | 1 379 | 1 547 | 129 | 129 | 121 | 1 125 | 1 339 | 19.0 |
| Non-monetary gold | 9 087 | 10 740 | 12 272 | 1 429 | 2 213 | 2 105 | 9 228 | 14 054 | 52.3 |

(a) For all time periods, estimates for sugar, sugar preparations and honey are included in Other non-rural.

GOODS DEBITS(a): Original

| | | | | | | | 9 MONTHS ENDED MARCH | | Change |
|---|-----------------|-----------------|-----------------|----------------|----------------|----------------|-------------------------|-----------------|-------------|
| | 2005-06 | 2006-07 | 2007-08 | Jan 2009 | Feb 2009 | Mar 2009 | 2008 | 2009 | |
| | \$m | \$m | \$m | \$m | \$m | \$m | \$m | \$m | |
| Total goods debits | -169 716 | -184 024 | -205 089 | -17 593 | -16 873 | -17 654 | -150 719 | -175 859 | 16.7 |
| <i>Consumption goods</i> | -50 221 | -54 913 | -59 371 | -4 846 | -4 047 | -4 944 | -44 628 | -47 224 | 5.8 |
| Food and beverages, mainly for consumption | -6 169 | -7 182 | -7 840 | -754 | -616 | -755 | -5 946 | -6 848 | 15.2 |
| Household electrical items | -4 191 | -4 525 | -5 051 | -367 | -318 | -362 | -3 819 | -4 063 | 6.4 |
| Non-industrial transport equipment | -13 596 | -14 894 | -16 872 | -915 | -664 | -865 | -12 399 | -10 370 | -16.4 |
| Textiles, clothing and footwear | -6 364 | -6 805 | -7 051 | -863 | -707 | -755 | -5 450 | -6 540 | 20.0 |
| Toys, books and leisure goods | -4 057 | -4 328 | -4 561 | -365 | -296 | -403 | -3 430 | -4 014 | 17.0 |
| Consumption goods n.e.s. | -15 844 | -17 179 | -17 996 | -1 582 | -1 446 | -1 804 | -13 584 | -15 389 | 13.3 |
| <i>Capital goods</i> | -40 077 | -41 765 | -45 351 | -4 045 | -4 154 | -4 349 | -33 558 | -40 439 | 20.5 |
| Machinery and industrial equipment | -14 347 | -15 330 | -16 480 | -1 567 | -1 283 | -1 807 | -12 342 | -14 685 | 19.0 |
| ADP equipment | -6 158 | -7 008 | -7 074 | -514 | -473 | -623 | -5 249 | -5 476 | 4.3 |
| Telecommunications equipment | -5 320 | -5 315 | -5 790 | -428 | -488 | -623 | -4 394 | -4 881 | 11.1 |
| Civil aircraft(b) | -2 967 | -1 667 | -2 691 | na | na | na | -1 829 | na | na |
| Industrial transport equipment n.e.s. | -5 491 | -6 454 | -7 554 | -470 | -397 | -411 | -5 473 | -5 581 | 2.0 |
| Capital goods n.e.s.(b) | -5 794 | -5 991 | -5 762 | -1 066 | -1 513 | -885 | -4 271 | -8 292 | 94.1 |
| <i>Intermediate and other merchandise goods</i> | -72 737 | -79 923 | -90 618 | -7 385 | -6 727 | -7 056 | -65 624 | -76 399 | 16.4 |
| Food and beverages, mainly for industry | -651 | -819 | -923 | -112 | -84 | -93 | -681 | -923 | 35.5 |
| Primary industrial supplies n.e.s. | -1 186 | -1 552 | -1 477 | -205 | -79 | -142 | -1 099 | -1 615 | 47.0 |
| Fuels and lubricants | -21 014 | -21 470 | -29 697 | -1 820 | -1 885 | -1 697 | -20 784 | -22 716 | 9.3 |
| Parts for transport equipment | -7 315 | -8 355 | -8 833 | -628 | -559 | -670 | -6 548 | -6 808 | 4.0 |
| Parts for ADP equipment | -1 857 | -1 620 | -1 115 | -82 | -73 | -102 | -837 | -815 | -2.6 |
| Other parts for capital goods | -10 166 | -11 780 | -11 990 | -1 196 | -1 033 | -1 249 | -8 837 | -10 719 | 21.3 |
| Organic and inorganic chemicals | -4 133 | -4 406 | -4 673 | -475 | -437 | -358 | -3 433 | -4 248 | 23.7 |
| Paper and paperboard | -2 303 | -2 368 | -2 359 | -207 | -175 | -192 | -1 787 | -1 943 | 8.7 |
| Textile yarn and fabrics | -1 361 | -1 366 | -1 334 | -111 | -94 | -115 | -1 009 | -1 059 | 5.0 |
| Iron and steel | -3 240 | -3 817 | -3 721 | -502 | -420 | -341 | -2 672 | -4 699 | 75.9 |
| Plastics | -2 517 | -2 957 | -3 064 | -232 | -207 | -242 | -2 292 | -2 423 | 5.7 |
| Processed industrial supplies n.e.s. | -15 863 | -17 794 | -20 013 | -1 732 | -1 591 | -1 778 | -14 536 | -17 288 | 18.9 |
| Other merchandise goods(b) | -1 131 | -1 619 | -1 419 | -83 | -90 | -77 | -1 109 | -1 143 | 3.1 |
| <i>Other goods</i> | -6 681 | -7 423 | -9 749 | -1 317 | -1 945 | -1 305 | -6 909 | -11 797 | 70.7 |
| Goods for processing | -445 | -507 | -233 | -170 | -1 | -166 | -81 | -635 | . . |
| Repairs on goods | -115 | -131 | -117 | -11 | -25 | -27 | -85 | -151 | 77.6 |
| Goods procured in ports by carriers | -1 406 | -1 468 | -1 771 | -151 | -151 | -150 | -1 212 | -1 521 | 25.5 |
| Non-monetary gold | -4 715 | -5 317 | -7 628 | -985 | -1 768 | -962 | -5 531 | -9 490 | 71.6 |

. . not applicable

na not available

(a) For sign conventions, see paragraph 11 of the Explanatory Notes.

(b) From December 2008, the Civil aircraft series and commodities subject to a 'no commodity details' or 'no value details' restriction are included in Capital goods n.e.s.. From September to November 2008 commodities with these restrictions are included in Civil aircraft and for earlier periods are included in Other merchandise goods.

GOODS CREDITS: Seasonally Adjusted

| | Jun 2008 | Jul 2008 | Aug 2008 | Sep 2008 | Oct 2008 | Nov 2008 | Dec 2008 | Jan 2009 | Feb 2009 | Mar 2009 |
|---|---------------|---------------|---------------|---------------|---------------|---------------|---------------|---------------|---------------|---------------|
| | \$m | \$m | \$m | \$m | \$m | \$m | \$m | \$m | \$m | \$m |
| Total goods credits | 18 417 | 18 717 | 20 043 | 21 787 | 23 058 | 21 853 | 20 279 | 19 076 | 20 021 | 20 012 |
| <i>Rural goods</i> | 2 249 | 2 219 | 2 292 | 2 260 | 2 569 | 2 488 | 2 540 | 2 496 | 2 587 | 2 844 |
| Meat and meat preparations | 567 | 582 | 591 | 631 | 724 | 656 | 635 | 608 | 660 | 648 |
| Cereal grains and cereal preparations | 569 | 487 | 512 | 390 | 502 | 472 | 632 | 578 | 610 | 859 |
| Wool and sheepskins | 182 | 216 | 212 | 217 | 243 | 203 | 187 | 183 | 197 | 184 |
| Other rural(a) | 932 | 933 | 977 | 1 023 | 1 100 | 1 157 | 1 085 | 1 127 | 1 120 | 1 153 |
| <i>Non-rural goods</i> | 15 111 | 14 876 | 16 264 | 18 008 | 18 691 | 17 750 | 16 186 | 14 929 | 14 968 | 14 842 |
| Metal ores and minerals | 4 265 | 4 453 | 4 694 | 5 553 | 5 034 | 4 352 | 3 965 | 4 361 | 4 532 | 4 521 |
| Coal, coke and briquettes(b) | 4 067 | 3 845 | 4 774 | 5 492 | 6 409 | 6 280 | 5 485 | 4 438 | 4 316 | 4 106 |
| Other mineral fuels(c) | 2 050 | 1 866 | 1 761 | 1 907 | 2 077 | 2 085 | 1 947 | 1 738 | 1 682 | 1 584 |
| Metals (excl. non-monetary gold)(c) | 1 187 | 1 217 | 1 303 | 1 298 | 1 258 | 1 191 | 1 021 | 878 | 889 | 847 |
| Machinery | 698 | 712 | 773 | 757 | 795 | 877 | 763 | 701 | 785 | 782 |
| Transport equipment | 498 | 529 | 527 | 542 | 626 | 472 | 499 | 435 | 360 | 424 |
| Other manufactures | 1 416 | 1 438 | 1 474 | 1 528 | 1 542 | 1 554 | 1 514 | 1 454 | 1 495 | 1 552 |
| Other non-rural (incl. sugar and beverages) | 931 | 816 | 958 | 931 | 949 | 937 | 993 | 923 | 910 | 1 025 |
| <i>Other goods</i> | 1 057 | 1 622 | 1 487 | 1 519 | 1 799 | 1 616 | 1 553 | 1 650 | 2 466 | 2 327 |
| Goods for processing(d) | 23 | 31 | 40 | 36 | 100 | 52 | 47 | 79 | 110 | 93 |
| Repairs on goods(d) | 10 | 9 | 10 | 8 | 5 | 8 | 12 | 7 | 7 | 8 |
| Goods procured in ports by carriers(c) | 142 | 147 | 158 | 162 | 166 | 159 | 139 | 135 | 136 | 121 |
| Non-monetary gold(d) | 882 | 1 435 | 1 279 | 1 313 | 1 528 | 1 397 | 1 355 | 1 429 | 2 213 | 2 105 |

(a) For all time periods, estimates for sugar, sugar preparations and honey are included in Other non-rural.

(b) Only a length-of-month effect has been applied to this component.

(c) In using these seasonally adjusted series, care should be exercised because of the difficulties associated with reliably estimating the seasonal pattern.

(d) This component is not seasonally adjusted.

GOODS DEBITS(a): Seasonally Adjusted

| | Jun 2008 | Jul 2008 | Aug 2008 | Sep 2008 | Oct 2008 | Nov 2008 | Dec 2008 | Jan 2009 | Feb 2009 | Mar 2009 |
|---|----------------|----------------|----------------|----------------|----------------|----------------|----------------|----------------|----------------|----------------|
| | \$m | \$m | \$m | \$m | \$m | \$m | \$m | \$m | \$m | \$m |
| Total goods debits | -18 605 | -19 498 | -18 839 | -20 319 | -20 289 | -20 711 | -20 015 | -18 473 | -18 429 | -17 680 |
| <i>Consumption goods</i> | -5 209 | -5 145 | -5 050 | -5 104 | -5 238 | -5 338 | -5 438 | -5 166 | -4 485 | -5 146 |
| Food and beverages, mainly for consumption | -696 | -693 | -696 | -737 | -748 | -751 | -779 | -761 | -691 | -790 |
| Household electrical items | -576 | -514 | -373 | -409 | -445 | -470 | -432 | -457 | -386 | -417 |
| Non-industrial transport equipment | -1 360 | -1 388 | -1 411 | -1 278 | -1 208 | -1 171 | -1 234 | -1 010 | -794 | -898 |
| Textiles, clothing and footwear | -612 | -600 | -615 | -650 | -706 | -734 | -777 | -751 | -646 | -780 |
| Toys, books and leisure goods | -403 | -425 | -385 | -427 | -445 | -447 | -463 | -447 | -379 | -463 |
| Consumption goods n.e.s. | -1 562 | -1 524 | -1 571 | -1 601 | -1 685 | -1 765 | -1 753 | -1 739 | -1 591 | -1 797 |
| <i>Capital goods</i> | -4 148 | -4 030 | -4 246 | -4 433 | -4 463 | -4 427 | -5 255 | -4 472 | -4 786 | -4 223 |
| Machinery and industrial equipment | -1 457 | -1 514 | -1 526 | -1 533 | -1 615 | -1 656 | -1 670 | -1 605 | -1 520 | -1 722 |
| ADP equipment | -517 | -551 | -594 | -595 | -758 | -683 | -658 | -598 | -592 | -580 |
| Telecommunications equipment | -459 | -497 | -481 | -557 | -570 | -549 | -487 | -564 | -596 | -612 |
| Civil aircraft(b)(c) | -500 | -180 | -382 | -512 | -185 | -265 | na | na | na | na |
| Industrial transport equipment n.e.s. | -710 | -801 | -777 | -752 | -668 | -614 | -606 | -505 | -460 | -424 |
| Capital goods n.e.s.(b) | -505 | -486 | -486 | -484 | -667 | -660 | -1 833 | -1 199 | -1 618 | -886 |
| <i>Intermediate and other merchandise goods</i> | -8 333 | -9 152 | -8 493 | -9 557 | -9 572 | -9 163 | -8 339 | -7 519 | -7 213 | -7 006 |
| Food and beverages, mainly for industry | -77 | -78 | -91 | -105 | -108 | -119 | -109 | -107 | -98 | -103 |
| Primary industrial supplies n.e.s.(d) | -141 | -176 | -178 | -158 | -175 | -257 | -196 | -193 | -101 | -143 |
| Fuels and lubricants(c) | -2 863 | -3 663 | -2 691 | -3 202 | -3 291 | -2 417 | -2 050 | -1 820 | -1 885 | -1 697 |
| Parts for transport equipment | -770 | -774 | -806 | -809 | -814 | -842 | -722 | -685 | -621 | -669 |
| Parts for ADP equipment | -86 | -86 | -84 | -88 | -90 | -117 | -93 | -91 | -88 | -91 |
| Other parts for capital goods | -1 027 | -1 010 | -1 078 | -1 152 | -1 197 | -1 304 | -1 283 | -1 265 | -1 162 | -1 238 |
| Organic and inorganic chemicals | -460 | -435 | -467 | -495 | -517 | -595 | -524 | -454 | -420 | -349 |
| Paper and paperboard | -207 | -208 | -208 | -223 | -222 | -224 | -207 | -209 | -194 | -194 |
| Textile yarn and fabrics | -105 | -106 | -111 | -117 | -130 | -123 | -125 | -115 | -106 | -114 |
| Iron and steel | -405 | -429 | -486 | -569 | -625 | -585 | -661 | -461 | -454 | -327 |
| Plastics | -275 | -269 | -261 | -281 | -302 | -285 | -266 | -234 | -231 | -247 |
| Processed industrial supplies n.e.s. | -1 803 | -1 801 | -1 881 | -1 991 | -1 999 | -2 225 | -2 012 | -1 802 | -1 764 | -1 756 |
| Other merchandise goods(b)(c) | -114 | -117 | -149 | -366 | -101 | -70 | -90 | -83 | -90 | -77 |
| <i>Other goods</i> | -914 | -1 171 | -1 051 | -1 226 | -1 016 | -1 783 | -983 | -1 317 | -1 945 | -1 305 |
| Goods for processing(c) | -7 | -155 | -1 | -1 | -1 | -139 | -1 | -170 | -1 | -166 |
| Repairs on goods(c) | -9 | -11 | -11 | -16 | -11 | -17 | -22 | -11 | -25 | -27 |
| Goods procured in ports by carriers(c) | -185 | -199 | -199 | -202 | -156 | -156 | -157 | -151 | -151 | -150 |
| Non-monetary gold(e) | -713 | -806 | -840 | -1 007 | -848 | -1 471 | -803 | -985 | -1 768 | -962 |

na not available

(a) For sign conventions, see paragraph 11 of the Explanatory Notes.

(b) From December 2008, the Civil aircraft series and commodities subject to a 'no commodity details' or 'no value details' restriction are included in Capital goods n.e.s.. From September to November 2008 commodities with these restrictions are included in Civil aircraft and for earlier periods are included in Other merchandise goods.

(c) These components are not seasonally adjusted.

(d) In using these seasonally adjusted series, care should be exercised because of the difficulties associated with reliably estimating the seasonal pattern.

(e) From October 1995, this component is not seasonally adjusted.

| | Jun 2008 | Jul 2008 | Aug 2008 | Sep 2008 | Oct 2008 | Nov 2008 | Dec 2008 | Jan 2009 | Feb 2009 | Mar 2009 |
|---|---------------|---------------|---------------|---------------|---------------|---------------|---------------|---------------|---------------|---------------|
| | \$m | \$m | \$m | \$m | \$m | \$m | \$m | \$m | \$m | \$m |
| Total goods credits | 18 891 | 19 669 | 20 504 | 21 164 | 21 462 | 21 317 | 20 866 | 20 352 | 19 906 | 19 501 |
| <i>Rural goods</i> | 2 294 | 2 298 | 2 317 | 2 355 | 2 411 | 2 475 | 2 533 | 2 589 | 2 644 | 2 697 |
| Meat and meat preparations | 586 | 605 | 622 | 637 | 649 | 654 | 652 | 647 | 643 | 638 |
| Cereal grains and cereal preparations | 543 | 516 | 490 | 473 | 479 | 513 | 563 | 620 | 677 | 735 |
| Wool and sheepskins | 207 | 210 | 214 | 216 | 214 | 209 | 200 | 193 | 187 | 183 |
| Other rural(a) | 958 | 967 | 992 | 1 029 | 1 069 | 1 099 | 1 118 | 1 129 | 1 137 | 1 142 |
| <i>Non-rural goods</i> | 15 292 | 15 981 | 16 711 | 17 268 | 17 451 | 17 169 | 16 557 | 15 849 | 15 192 | 14 589 |
| Metal ores and minerals(b) | 4 458 | 4 671 | 4 813 | 4 841 | 4 769 | 4 624 | 4 474 | 4 374 | 4 327 | 4 293 |
| Coal, coke and briquettes(c) | 4 050 | 4 469 | 4 979 | 5 451 | 5 718 | 5 684 | 5 401 | 5 001 | 4 588 | 4 191 |
| Other mineral fuels | 1 906 | 1 919 | 1 941 | 1 963 | 1 969 | 1 950 | 1 899 | 1 821 | 1 736 | 1 648 |
| Metals (excl. non-monetary gold) | 1 233 | 1 260 | 1 272 | 1 263 | 1 217 | 1 141 | 1 051 | 964 | 889 | 829 |
| Machinery | 724 | 737 | 757 | 776 | 788 | 790 | 784 | 775 | 768 | 764 |
| Transport equipment | 514 | 530 | 546 | 550 | 538 | 513 | 480 | 446 | 416 | 391 |
| Other manufactures | 1 452 | 1 469 | 1 488 | 1 504 | 1 518 | 1 522 | 1 517 | 1 511 | 1 508 | 1 506 |
| Other non-rural (incl. sugar and beverages) | 955 | 927 | 917 | 921 | 934 | 946 | 952 | 955 | 959 | 968 |
| <i>Other goods</i> | 1 305 | 1 390 | 1 475 | 1 541 | 1 601 | 1 673 | 1 775 | 1 914 | 2 070 | 2 215 |
| Goods for processing | 27 | 34 | 42 | 49 | 57 | 65 | 72 | 80 | 88 | 94 |
| Repairs on goods | 10 | 9 | 9 | 8 | 8 | 8 | 8 | 8 | 8 | 8 |
| Goods procured in ports by carriers | 147 | 152 | 156 | 159 | 158 | 153 | 147 | 139 | 132 | 126 |
| Non-monetary gold | 1 121 | 1 195 | 1 269 | 1 324 | 1 377 | 1 447 | 1 548 | 1 687 | 1 842 | 1 986 |

- (a) For all time periods, estimates for sugar, sugar preparations and honey are included in Other non-rural.
- (b) A trend break of \$725m has been applied to metal ores and minerals, and related aggregates in April 2008. This trend break will be reassessed with the annual seasonal reanalysis. Trend estimates from April 2008 should be used with caution.
- (c) A trend break of \$2,000m has been applied to coal, coke and briquettes, and related aggregates in April 2008. This trend break will be reassessed with the annual seasonal reanalysis. Trend estimates from April 2008 should be used with caution.

GOODS DEBITS(a): Trend Estimates

| | Jun 2008 | Jul 2008 | Aug 2008 | Sep 2008 | Oct 2008 | Nov 2008 | Dec 2008 | Jan 2009 | Feb 2009 | Mar 2009 |
|---|----------------|----------------|----------------|----------------|----------------|----------------|----------------|----------------|----------------|----------------|
| | \$m | \$m | \$m | \$m | \$m | \$m | \$m | \$m | \$m | \$m |
| Total goods debits | -18 754 | -19 175 | -19 614 | -19 903 | -20 048 | -19 751 | -19 286 | -18 695 | -18 134 | -17 582 |
| <i>Consumption goods</i> | -5 060 | -5 065 | -5 117 | -5 183 | -5 226 | -5 227 | -5 184 | -5 111 | -5 030 | -4 953 |
| Food and beverages, mainly for consumption | -694 | -702 | -716 | -730 | -741 | -750 | -753 | -754 | -754 | -753 |
| Household electrical items | -397 | -399 | -407 | -420 | -431 | -438 | -439 | -434 | -427 | -417 |
| Non-industrial transport equipment | -1 423 | -1 383 | -1 346 | -1 305 | -1 251 | -1 180 | -1 099 | -1 018 | -940 | -879 |
| Textiles, clothing and footwear | -602 | -614 | -637 | -667 | -695 | -717 | -732 | -738 | -741 | -741 |
| Toys, books and leisure goods | -405 | -410 | -419 | -428 | -435 | -440 | -441 | -440 | -438 | -434 |
| Consumption goods n.e.s. | -1 539 | -1 557 | -1 591 | -1 634 | -1 673 | -1 702 | -1 719 | -1 726 | -1 729 | -1 729 |
| <i>Capital goods</i> | -4 058 | -4 140 | -4 232 | -4 296 | -4 444 | -4 387 | -4 346 | -4 254 | -4 170 | -4 097 |
| Machinery and industrial equipment | -1 485 | -1 505 | -1 537 | -1 569 | -1 597 | -1 614 | -1 624 | -1 630 | -1 634 | -1 639 |
| ADP equipment | -555 | -572 | -603 | -636 | -660 | -665 | -652 | -631 | -609 | -587 |
| Telecommunications equipment | -474 | -492 | -510 | -525 | -536 | -544 | -552 | -563 | -576 | -586 |
| Civil aircraft(b) | -326 | -335 | -339 | -334 | -312 | -284 | na | na | na | na |
| Industrial transport equipment n.e.s. | -724 | -744 | -750 | -732 | -691 | -633 | -575 | -522 | -475 | -436 |
| Capital goods n.e.s.(b)(c) | -493 | -491 | -494 | -499 | -650 | -647 | np | np | np | np |
| <i>Intermediate and other merchandise goods</i> | -8 634 | -8 908 | -9 145 | -9 247 | -9 139 | -8 830 | -8 382 | -7 894 | -7 444 | -7 006 |
| Food and beverages, mainly for industry | -82 | -86 | -93 | -101 | -106 | -109 | -109 | -108 | -105 | -103 |
| Primary industrial supplies n.e.s. | -147 | -159 | -175 | -189 | -197 | -197 | -189 | -175 | -160 | -145 |
| Fuels and lubricants | -3 136 | -3 202 | -3 181 | -3 052 | -2 826 | -2 548 | -2 262 | -2 007 | -1 805 | -1 613 |
| Parts for transport equipment | -779 | -792 | -806 | -812 | -802 | -777 | -742 | -705 | -671 | -643 |
| Parts for ADP equipment | -85 | -86 | -88 | -92 | -95 | -96 | -96 | -95 | -93 | -91 |
| Other parts for capital goods | -1 042 | -1 064 | -1 103 | -1 153 | -1 201 | -1 236 | -1 252 | -1 252 | -1 246 | -1 234 |
| Organic and inorganic chemicals | -428 | -453 | -483 | -510 | -525 | -522 | -503 | -472 | -436 | -401 |
| Paper and paperboard | -206 | -210 | -214 | -218 | -219 | -216 | -212 | -206 | -201 | -195 |
| Textile yarn and fabrics | -107 | -110 | -114 | -118 | -121 | -122 | -120 | -117 | -114 | -112 |
| Iron and steel | -407 | -455 | -509 | -559 | -588 | -587 | -558 | -513 | -461 | -408 |
| Plastics | -268 | -274 | -279 | -282 | -280 | -274 | -264 | -254 | -244 | -235 |
| Processed industrial supplies n.e.s. | -1 816 | -1 864 | -1 928 | -1 989 | -2 022 | -2 015 | -1 972 | -1 907 | -1 838 | -1 770 |
| Other merchandise goods(b) | -132 | -154 | -171 | -174 | -157 | -130 | -103 | -83 | -70 | -57 |
| <i>Other goods</i> | -1 002 | -1 062 | -1 120 | -1 177 | -1 239 | -1 307 | -1 374 | -1 436 | -1 491 | -1 525 |
| Goods for processing | -61 | -55 | -48 | -41 | -41 | -52 | -68 | -84 | -101 | -113 |
| Repairs on goods | -11 | -12 | -12 | -13 | -14 | -16 | -18 | -20 | -22 | -24 |
| Goods procured in ports by carriers | -193 | -196 | -192 | -184 | -174 | -164 | -156 | -151 | -148 | -146 |
| Non-monetary gold | -737 | -800 | -868 | -938 | -1 010 | -1 075 | -1 132 | -1 181 | -1 220 | -1 242 |

na not available

np not available for publication but included in totals where applicable, unless otherwise indicated

(a) For sign conventions, see paragraph 11 of the Explanatory Notes.

(b) From December 2008, the Civil aircraft series and commodities subject to a 'no commodity details' or 'no value details' restriction are included in Capital goods n.e.s.. From September to November 2008 commodities with these restrictions are included in Civil aircraft and for earlier periods are included in Other merchandise goods. Trend estimates for the Capital goods n.e.s. series from December 2008 have been suppressed due to the change in the composition of the series.

(c) A trend break of \$167m has been applied to Capital goods, n.e.s. debits and related aggregates in October 2008.

SERVICES (a)(b), Summary—Original

| | | | | | | | 9 MONTHS ENDED MARCH | | Change |
|------------------------------------|----------------|----------------|----------------|---------------|---------------|---------------|-------------------------|----------------|-------------|
| | 2005-06 | 2006-07 | 2007-08 | Jan 2009 | Feb 2009 | Mar 2009 | 2008 | 2009 | |
| | \$m | \$m | \$m | \$m | \$m | \$m | \$m | \$m | |
| Services credits | 41 849 | 46 181 | 51 019 | 4 523 | 4 683 | 4 812 | 37 974 | 41 002 | 8.0 |
| Transportation services | 8 208 | 8 617 | 9 216 | 752 | 708 | 692 | 6 945 | 6 536 | -5.9 |
| Passenger(c) | 4 104 | 4 237 | 4 118 | 404 | 360 | 346 | 3 222 | 3 046 | -5.5 |
| Freight | 608 | 609 | 621 | 48 | 48 | 46 | 466 | 509 | 9.2 |
| Other | 3 496 | 3 771 | 4 477 | 300 | 300 | 300 | 3 257 | 2 981 | -8.5 |
| Travel services | 22 624 | 25 161 | 28 227 | 2 523 | 2 727 | 2 872 | 21 138 | 23 071 | 9.1 |
| Other services | 11 017 | 12 403 | 13 576 | 1 248 | 1 248 | 1 248 | 9 891 | 11 395 | 15.2 |
| Services debits | -41 078 | -44 428 | -50 254 | -4 642 | -3 922 | -4 300 | -37 034 | -41 088 | 10.9 |
| Transportation services | -14 508 | -15 360 | -16 380 | -1 214 | -1 072 | -1 209 | -12 136 | -12 752 | 5.1 |
| Passenger(c) | -6 284 | -6 876 | -7 278 | -436 | -425 | -514 | -5 329 | -4 915 | -7.8 |
| Freight | -7 776 | -8 036 | -8 600 | -726 | -595 | -647 | -6 446 | -7 381 | 14.5 |
| Other | -448 | -448 | -502 | -52 | -52 | -48 | -361 | -456 | 26.3 |
| Travel services | -15 090 | -15 934 | -18 204 | -1 782 | -1 198 | -1 434 | -13 591 | -14 069 | 3.5 |
| Other services | -11 480 | -13 134 | -15 670 | -1 646 | -1 652 | -1 657 | -11 307 | -14 267 | 26.2 |
| Memorandum items: | | | | | | | | | |
| Tourism related service credits(d) | 26 728 | 29 398 | 32 345 | 2 927 | 3 087 | 3 218 | 24 360 | 26 117 | 7.2 |
| Tourism related service debits(d) | -21 374 | -22 810 | -25 482 | -2 218 | -1 623 | -1 948 | -18 920 | -18 984 | 0.3 |

(a) For sign conventions, see paragraph 11 of the Explanatory Notes.

(b) For more detailed trade in services components, see table 11.

(c) Passenger services includes agency fees and commission receipts for air transport.

(d) For a more detailed explanation of tourism related services, see paragraphs 18 and 19 of the Explanatory Notes.

| | Jun 2008 | Jul 2008 | Aug 2008 | Sep 2008 | Oct 2008 | Nov 2008 | Dec 2008 | Jan 2009 | Feb 2009 | Mar 2009 |
|------------------------------------|---------------|---------------|---------------|---------------|---------------|---------------|---------------|---------------|---------------|---------------|
| | \$m | \$m | \$m | \$m | \$m | \$m | \$m | \$m | \$m | \$m |
| SEASONALLY ADJUSTED | | | | | | | | | | |
| Services credits | 4 552 | 4 483 | 4 406 | 4 397 | 4 470 | 4 492 | 4 546 | 4 607 | 4 610 | 4 635 |
| Transportation services | 788 | 763 | 756 | 749 | 681 | 696 | 701 | 699 | 689 | 676 |
| Passenger(b) | 335 | 333 | 324 | 319 | 304 | 318 | 326 | 338 | 332 | 323 |
| Freight(c) | 53 | 65 | 65 | 63 | 53 | 54 | 52 | 52 | 52 | 50 |
| Other(c) | 400 | 365 | 367 | 367 | 323 | 324 | 324 | 308 | 306 | 302 |
| Travel services | 2 548 | 2 491 | 2 409 | 2 397 | 2 524 | 2 522 | 2 563 | 2 610 | 2 618 | 2 650 |
| Other services(c) | 1 216 | 1 229 | 1 241 | 1 251 | 1 265 | 1 274 | 1 282 | 1 298 | 1 304 | 1 309 |
| Services debits | -4 527 | -4 517 | -4 597 | -4 591 | -4 556 | -4 617 | -4 530 | -4 444 | -4 450 | -4 469 |
| Transportation services | -1 482 | -1 459 | -1 463 | -1 488 | -1 489 | -1 513 | -1 436 | -1 267 | -1 216 | -1 218 |
| Passenger(b) | -669 | -605 | -605 | -594 | -569 | -545 | -507 | -483 | -507 | -507 |
| Freight | -765 | -812 | -816 | -852 | -862 | -910 | -866 | -732 | -657 | -663 |
| Other(d) | -49 | -42 | -42 | -42 | -58 | -58 | -62 | -52 | -52 | -48 |
| Travel services | -1 581 | -1 544 | -1 606 | -1 563 | -1 537 | -1 556 | -1 539 | -1 520 | -1 552 | -1 555 |
| Other services(c) | -1 463 | -1 514 | -1 528 | -1 540 | -1 529 | -1 548 | -1 555 | -1 657 | -1 682 | -1 697 |
| Memorandum items: | | | | | | | | | | |
| Tourism related service credits(e) | 2 882 | 2 824 | 2 734 | 2 716 | 2 829 | 2 840 | 2 888 | 2 948 | 2 949 | 2 973 |
| Tourism related service debits(e) | -2 250 | -2 150 | -2 211 | -2 157 | -2 106 | -2 101 | -2 047 | -2 003 | -2 059 | -2 062 |

TREND ESTIMATES

| | | | | | | | | | | |
|------------------------------------|---------------|---------------|---------------|---------------|---------------|---------------|---------------|---------------|---------------|---------------|
| Services credits | 4 476 | 4 472 | 4 458 | 4 452 | 4 464 | 4 496 | 4 539 | 4 579 | 4 612 | 4 638 |
| Transportation services | 786 | 767 | 748 | 729 | 714 | 703 | 695 | 690 | 685 | 682 |
| Passenger(b) | 337 | 330 | 323 | 318 | 318 | 320 | 323 | 327 | 330 | 332 |
| Freight | 57 | 60 | 61 | 60 | 58 | 55 | 53 | 51 | 51 | 50 |
| Other | 391 | 378 | 364 | 351 | 338 | 328 | 319 | 311 | 305 | 301 |
| Travel services | 2 472 | 2 471 | 2 467 | 2 470 | 2 487 | 2 519 | 2 559 | 2 595 | 2 625 | 2 647 |
| Other services | 1 219 | 1 233 | 1 243 | 1 253 | 1 263 | 1 274 | 1 285 | 1 294 | 1 302 | 1 309 |
| Services debits | -4 520 | -4 557 | -4 580 | -4 586 | -4 576 | -4 555 | -4 526 | -4 497 | -4 470 | -4 449 |
| Transportation services | -1 459 | -1 474 | -1 489 | -1 495 | -1 480 | -1 443 | -1 390 | -1 330 | -1 271 | -1 218 |
| Passenger(b) | -632 | -625 | -610 | -588 | -563 | -540 | -522 | -507 | -497 | -490 |
| Freight | -783 | -805 | -834 | -858 | -864 | -848 | -812 | -767 | -720 | -676 |
| Other | -44 | -45 | -46 | -49 | -52 | -55 | -56 | -55 | -54 | -52 |
| Travel services | -1 577 | -1 576 | -1 572 | -1 563 | -1 554 | -1 547 | -1 542 | -1 540 | -1 540 | -1 544 |
| Other services | -1 484 | -1 507 | -1 519 | -1 528 | -1 542 | -1 565 | -1 594 | -1 627 | -1 659 | -1 687 |
| Memorandum items: | | | | | | | | | | |
| Tourism related service credits(e) | 2 809 | 2 801 | 2 790 | 2 788 | 2 804 | 2 839 | 2 883 | 2 922 | 2 954 | 2 979 |
| Tourism related service debits(e) | -2 209 | -2 201 | -2 181 | -2 151 | -2 117 | -2 087 | -2 064 | -2 048 | -2 037 | -2 034 |

(a) For sign conventions, see paragraph 11 of the Explanatory Notes.

(b) Passenger services includes agency fees and commission receipts for air transport.

(c) In using these seasonally adjusted series, care should be exercised because of the difficulties associated with reliably estimating the seasonal pattern.

(d) This component is not seasonally adjusted.

(e) For a more detailed explanation of tourism related services, see paragraphs 18 and 19 of the Explanatory Notes.

| | CREDITS | | | | DEBITS | | | |
|---|-----------------|-----------------|-----------------|-----------------|-----------------|-----------------|-----------------|-----------------|
| | Jun Qtr 2008 | Sep Qtr 2008 | Dec Qtr 2008 | Mar Qtr 2009 | Jun Qtr 2008 | Sep Qtr 2008 | Dec Qtr 2008 | Mar Qtr 2009 |
| | \$m | \$m | \$m | \$m | \$m | \$m | \$m | \$m |
| Services | 13 045 | 13 285 | 13 699 | 14 018 | -13 220 | -14 213 | -14 011 | -12 864 |
| Transportation services | 2 271 | 2 261 | 2 123 | 2 152 | -4 244 | -4 555 | -4 702 | -3 495 |
| Passenger(c) | 896 | 949 | 987 | 1 110 | -1 949 | -1 938 | -1 602 | -1 375 |
| Freight | 155 | 201 | 166 | 142 | -2 154 | -2 491 | -2 922 | -1 968 |
| Other | 1 220 | 1 111 | 970 | 900 | -141 | -126 | -178 | -152 |
| Travel services | 7 089 | 7 345 | 7 604 | 8 122 | -4 613 | -5 080 | -4 575 | -4 414 |
| Business | 687 | 704 | 640 | 657 | -811 | -775 | -618 | -688 |
| Personal | 6 402 | 6 641 | 6 964 | 7 465 | -3 802 | -4 305 | -3 957 | -3 726 |
| Education-related | 3 767 | 4 174 | 3 723 | 4 329 | -201 | -309 | -175 | -211 |
| Other | 2 635 | 2 467 | 3 241 | 3 136 | -3 601 | -3 996 | -3 782 | -3 515 |
| Communication services(d) | 216 | 297 | 237 | 258 | -229 | -324 | -366 | -363 |
| Construction services | 8 | 42 | 30 | 24 | — | — | — | — |
| Insurance services | 181 | 186 | 186 | 186 | -233 | -243 | -243 | -243 |
| Financial services | 258 | 270 | 270 | 270 | -155 | -162 | -162 | -162 |
| Computer and information services | 425 | 453 | 465 | 405 | -394 | -399 | -420 | -432 |
| Royalties and license fees | 220 | 228 | 177 | 159 | -888 | -876 | -885 | -792 |
| Other business services | 1 974 | 1 797 | 2 208 | 2 001 | -1 947 | -1 872 | -2 157 | -2 328 |
| Merchandising and other trade-related | 321 | 249 | 288 | 255 | -53 | -63 | -60 | -51 |
| Operational leasing | 23 | 30 | 33 | 36 | -219 | -183 | -222 | -243 |
| Miscellaneous business, professional and technical | 1 630 | 1 518 | 1 887 | 1 710 | -1 675 | -1 626 | -1 875 | -2 034 |
| Legal, accounting, management consulting and public relations | 279 | 342 | 399 | 372 | -165 | -165 | -210 | -261 |
| Advertising, market research and public opinion polling | 64 | 90 | 117 | 81 | -66 | -42 | -54 | -57 |
| Research and development | 134 | 159 | 165 | 129 | -41 | -60 | -90 | -81 |
| Architectural, engineering and other technical services | 520 | 420 | 522 | 573 | -496 | -468 | -573 | -627 |
| Agriculture, mining and on-site processing | 99 | 90 | 72 | 69 | -391 | -348 | -369 | -420 |
| Services between affiliated enterprises n.i.e. | 335 | 237 | 390 | 282 | -256 | -267 | -270 | -228 |
| Other | 199 | 180 | 222 | 204 | -260 | -276 | -309 | -360 |
| Personal, cultural, and recreational services | 186 | 192 | 198 | 225 | -277 | -510 | -288 | -432 |
| Audiovisual and related services | 52 | 36 | 36 | 63 | -248 | -480 | -237 | -336 |
| Personal, cultural and recreational services | 134 | 156 | 162 | 162 | -29 | -30 | -51 | -96 |
| Government services n.i.e. | 217 | 214 | 201 | 216 | -240 | -192 | -213 | -203 |
| Memorandum items: | | | | | | | | |
| Tourism related services(e) | 7 985 | 8 294 | 8 591 | 9 232 | -6 562 | -7 018 | -6 177 | -5 789 |

— nil or rounded to zero (including null cells)

(a) For sign conventions, see paragraph 11 of the Explanatory Notes.

(b) For more information see paragraphs 15 and 16 of the Explanatory Notes.

(c) Passenger services includes agency fees and commission receipts for air transport.

(d) Communications services includes other services n.i.e.

(e) For a more detailed explanation of tourism related services, see paragraphs 18 and 19 of the Explanatory Notes.

| | | | | Per cent of total merchandise exports(b) | 9 MONTHS ENDED MARCH | |
|--|-------|-------|-------|---|-------------------------|--------|
| | Jan | Feb | Mar | | | |
| | 2009 | 2009 | 2009 | | 2008 | 2009 |
| | \$m | \$m | \$m | % | \$m | \$m |
| MAJOR COMMODITIES (c) | | | | | | |
| 011 Meat of bovine animals | 236 | 403 | 459 | 2.3 | 3 153 | 3 913 |
| 041 Wheat and meslin | 472 | 470 | 691 | 3.5 | 1 733 | 3 504 |
| 268 Wool and other animal hair | 112 | 180 | 195 | 1.0 | 1 913 | 1 551 |
| 281 Iron ore and concentrates | 3 055 | 2 880 | 3 168 | 15.8 | 13 638 | 27 412 |
| 283 Copper ores and concentrates | 144 | 226 | 233 | 1.2 | 3 209 | 2 535 |
| 285 Aluminium ores and concentrates | 451 | 482 | 437 | 2.2 | 4 429 | 5 003 |
| 321 Coal, not agglomerated | 4 486 | 3 965 | 4 173 | 20.9 | 15 176 | 44 991 |
| 333 Crude petroleum oils | 401 | 570 | 555 | 2.8 | 6 731 | 6 703 |
| 334 Refine petroleum oils | 232 | 208 | 200 | 1.0 | 2 730 | 2 214 |
| 343 Natural gas | 1 068 | 752 | 698 | 3.5 | 4 156 | 8 518 |
| 682 Copper | 171 | 178 | 139 | 0.7 | 2 270 | 2 130 |
| 684 Aluminium | 398 | 347 | 430 | 2.1 | 4 141 | 4 305 |
| 781 Motor vehicles for transport of people | 108 | 173 | 190 | 0.9 | 2 410 | 2 470 |
| 971 Gold, non-monetary | 1 379 | 2 156 | 2 024 | 10.1 | 9 045 | 13 563 |

SECTION AND DIVISION OF THE SITC

| | | | | | | |
|----|---|--------------|--------------|--------------|-------------|----------------------|
| 0 | Food and live animals | | | | | |
| 00 | Live animals other than fish, crustaceans, molluscs and aquatic invertebrates | 64 | 85 | 106 | 0.5 | 702 894 |
| 01 | Meat and meat preparations | 391 | 628 | 687 | 3.4 | 4 754 5 734 |
| 02 | Dairy products and birds' eggs | 199 | 221 | 220 | 1.1 | 2 002 2 033 |
| 03 | Fish (not marine mammals), crustaceans, molluscs and aquatic invertebrates, and preparations thereof | 131 | 85 | 91 | 0.5 | 814 895 |
| 04 | Cereals and cereal preparations | 620 | 687 | 927 | 4.6 | 3 144 4 994 |
| 05 | Vegetables and fruit | 114 | 140 | 170 | 0.8 | 951 1 145 |
| 06 | Sugars, sugar preparations and honey | 20 | 24 | 25 | 0.1 | 169 203 |
| 07 | Coffee, tea, cocoa, spices, and manufactures thereof | 19 | 26 | 28 | 0.1 | 196 221 |
| 08 | Feeding stuff for animals (excl. unmilled cereals) | 102 | 116 | 121 | 0.6 | 584 1 002 |
| 09 | Miscellaneous edible products and preparations | 54 | 56 | 57 | 0.3 | 345 498 |
| | <i>Total Food and live animals</i> | <i>1 713</i> | <i>2 068</i> | <i>2 433</i> | <i>12.2</i> | <i>13 661 17 619</i> |
| 1 | Beverages and tobacco | | | | | |
| 11 | Beverages | 153 | 198 | 227 | 1.1 | 2 188 2 008 |
| 12 | Tobacco and tobacco manufactures | 11 | 11 | 9 | — | 101 101 |
| | <i>Total Beverages and tobacco</i> | <i>164</i> | <i>208</i> | <i>235</i> | <i>1.2</i> | <i>2 289 2 108</i> |
| 2 | Crude materials, inedible, except fuels | | | | | |
| 21 | Hides, skins and furskins, raw | 32 | 42 | 57 | 0.3 | 517 517 |
| 22 | Oil-seeds and oleaginous fruits | 190 | 62 | 126 | 0.6 | 273 489 |
| 23 | Crude rubber (incl. synthetic and reclaimed) | 1 | 1 | 1 | — | 6 10 |
| 24 | Cork and wood | 80 | 74 | 86 | 0.4 | 938 947 |
| 25 | Pulp and waste paper | 16 | 17 | 20 | 0.1 | 193 204 |
| 26 | Textile fibres and their wastes (not manufactured into yarn or fabric) | 132 | 215 | 223 | 1.1 | 2 292 1 935 |
| 27 | Crude fertilizers (excl. those of Division 56) and crude minerals (excl. coal, petroleum and precious stones) | 25 | 30 | 30 | 0.2 | 374 283 |
| 28 | Metalliferous ores and metal scrap | 3 988 | 4 201 | 4 555 | 22.8 | 28 306 41 189 |
| 29 | Crude animal and vegetable materials, n.e.s. | 14 | 15 | 20 | 0.1 | 142 184 |
| | <i>Total Crude materials, inedible, except fuels</i> | <i>4 478</i> | <i>4 657</i> | <i>5 119</i> | <i>25.6</i> | <i>33 042 45 758</i> |
| 3 | Mineral fuels, lubricants and related materials | | | | | |
| 32 | Coal, coke and briquettes | 4 520 | 3 970 | 4 182 | 20.9 | 15 297 45 166 |
| 33 | Petroleum, petroleum products and related materials | 634 | 779 | 757 | 3.8 | 9 474 8 930 |
| 34 | Gas, natural and manufactured | 1 131 | 821 | 758 | 3.8 | 5 080 9 338 |
| | <i>Total Mineral fuels, lubricants and related materials</i> | <i>6 284</i> | <i>5 570</i> | <i>5 697</i> | <i>28.5</i> | <i>29 852 63 433</i> |

— nil or rounded to zero (including null cells)

(a) Some SITC sections and divisions exclude commodities subject to a confidentiality restriction. These are included in Division 98. For more information see paragraph 17 of the Explanatory Notes.

(b) Per cent of total merchandise is calculated for the most recent month.

(c) The 'Major commodities' section lists commodities at the SITC Rev 4 3-digit level which are the most significant (by value) or are of particular interest. Abbreviated descriptors have been used. The list of 'Major commodities' is reviewed annually.

| | Jan 2009 | Feb 2009 | Mar 2009 | Per cent of total merchandise exports(b) | 9 MONTHS ENDED MARCH | |
|----------------------------------|--|-------------|-------------|---|-------------------------|--------|
| | | | | | 2008 | 2009 |
| | | | | | \$m | \$m |
| SECTION AND DIVISION OF THE SITC | | | | | | |
| 4 | Animal and vegetable oils, fats and waxes | | | | | |
| 41 | 16 | 25 | 28 | 0.1 | 255 | 247 |
| 42 | 14 | 18 | 12 | 0.1 | 71 | 139 |
| 43 | Fats and oils (processed), waxes and inedible mixtures or preparations, of animal or vegetable origin, n.e.s. | | | | | |
| | 1 | 1 | 1 | — | 10 | 9 |
| | 31 | 44 | 41 | 0.2 | 337 | 394 |
| 5 | Chemicals and related products, nes | | | | | |
| 51 | 8 | 11 | 17 | 0.1 | 132 | 130 |
| 52 | 23 | 40 | 73 | 0.4 | 627 | 437 |
| 53 | 38 | 40 | 57 | 0.3 | 454 | 424 |
| 54 | 277 | 286 | 357 | 1.8 | 2 909 | 2 996 |
| 55 | Essential oils and resinoids and perfume materials; toilet, polishing and cleansing preparations | | | | | |
| | 41 | 49 | 60 | 0.3 | 418 | 468 |
| 56 | 38 | 33 | 20 | 0.1 | 224 | 642 |
| 57 | 16 | 21 | 23 | 0.1 | 269 | 232 |
| 58 | 28 | 33 | 41 | 0.2 | 240 | 295 |
| 59 | 86 | 83 | 113 | 0.6 | 657 | 851 |
| | 555 | 594 | 761 | 3.8 | 5 931 | 6 474 |
| 6 | Manufactured goods classified chiefly by material | | | | | |
| 61 | 12 | 19 | 25 | 0.1 | 283 | 207 |
| 62 | 15 | 15 | 20 | 0.1 | 196 | 196 |
| 63 | 10 | 14 | 18 | 0.1 | 117 | 124 |
| 64 | Paper, paperboard, and articles of paper pulp, of paper or of paperboard | | | | | |
| | 48 | 54 | 60 | 0.3 | 505 | 508 |
| 65 | 19 | 31 | 30 | 0.2 | 298 | 276 |
| 66 | 54 | 133 | 56 | 0.3 | 587 | 687 |
| 67 | 67 | 80 | 71 | 0.4 | 987 | 1 143 |
| 68 | 756 | 706 | 810 | 4.0 | 9 351 | 8 638 |
| 69 | 60 | 82 | 86 | 0.4 | 783 | 823 |
| | 1 039 | 1 134 | 1 175 | 5.9 | 13 106 | 12 602 |
| 7 | Machinery and transport equipment | | | | | |
| 71 | 50 | 68 | 73 | 0.4 | 911 | 698 |
| 72 | 94 | 157 | 182 | 0.9 | 1 296 | 1 482 |
| 73 | 8 | 17 | 14 | 0.1 | 161 | 147 |
| 74 | General industrial machinery and equipment, n.e.s. and machine parts, n.e.s. | | | | | |
| | 110 | 152 | 162 | 0.8 | 1 256 | 1 430 |
| 75 | 82 | 102 | 106 | 0.5 | 852 | 948 |
| 76 | Telecommunications and sound recording and reproducing apparatus and equipment | | | | | |
| | 72 | 93 | 103 | 0.5 | 684 | 862 |
| 77 | Electrical machinery, apparatus and appliances, parts (incl. non-electrical counterparts of electrical domestic equip) | | | | | |
| | 92 | 131 | 145 | 0.7 | 1 405 | 1 333 |
| 78 | 159 | 245 | 262 | 1.3 | 3 322 | 3 244 |
| 79 | 78 | 83 | 138 | 0.7 | 821 | 1 155 |
| | 745 | 1 048 | 1 183 | 5.9 | 10 707 | 11 300 |

— nil or rounded to zero (including null cells)

(b) Per cent of total merchandise is calculated for the most recent month.

(a) Some SITC sections and divisions exclude commodities subject to a confidentiality restriction. These are included in Division 98. For more information see paragraph 17 of the Explanatory Notes.

| | | | | Per cent of total merchandise imports(b) | 9 MONTHS ENDED MARCH | |
|--|-------|-------|-------|---|-------------------------|--------|
| | Jan | Feb | Mar | | | |
| | 2009 | 2009 | 2009 | | 2008 | 2009 |
| | \$m | \$m | \$m | % | \$m | \$m |
| MAJOR COMMODITIES (c) | | | | | | |
| 333 Crude petroleum oils | 708 | 890 | 743 | 4.3 | 12 309 | 11 531 |
| 334 Refined petroleum oils | 802 | 832 | 815 | 4.7 | 7 896 | 9 931 |
| 542 Medicaments | 582 | 586 | 751 | 4.3 | 4 791 | 5 390 |
| 641 Paper and paperboard | 177 | 152 | 162 | 0.9 | 1 516 | 1 628 |
| 723 Civil engineering and contractors' plant and equipment | 291 | 208 | 244 | 1.4 | 2 919 | 2 842 |
| 751 Office machines | 162 | 124 | 177 | 1.0 | 1 421 | 1 512 |
| 752 Automatic data processing machines | 412 | 375 | 508 | 2.9 | 4 093 | 4 403 |
| 761 Televisions | 197 | 168 | 155 | 0.9 | 2 346 | 2 145 |
| 764 Telecommunications equipment | 490 | 555 | 701 | 4.0 | 5 143 | 5 566 |
| 781 Motor vehicles for the transport of people | 761 | 564 | 750 | 4.3 | 11 012 | 8 985 |
| 782 Motor vehicles for the transport of goods | 337 | 309 | 333 | 1.9 | 4 385 | 4 293 |
| 784 Parts and accessories of motor vehicles | 199 | 155 | 192 | 1.1 | 1 951 | 1 937 |
| 971 Gold, non-monetary | 1 004 | 1 768 | 1 127 | 6.5 | 5 206 | 9 615 |

SECTION AND DIVISION OF THE SITC

| | | | | | | |
|----|---|-------|-------|-------|------|--------|
| 0 | Food and live animals | | | | | |
| 00 | Live animals other than fish, crustaceans, molluscs and aquatic invertebrates | 15 | 14 | 11 | 0.1 | 82 |
| 01 | Meat and meat preparations | 48 | 47 | 66 | 0.4 | 295 |
| 02 | Dairy products and birds' eggs | 46 | 43 | 44 | 0.3 | 451 |
| 03 | Fish (not marine mammals), crustaceans, molluscs and aquatic invertebrates, and preparations thereof | 124 | 99 | 110 | 0.6 | 870 |
| 04 | Cereals and cereal preparations | 59 | 53 | 69 | 0.4 | 478 |
| 05 | Vegetables and fruit | 148 | 126 | 141 | 0.8 | 1 157 |
| 06 | Sugars, sugar preparations and honey | 28 | 18 | 21 | 0.1 | 177 |
| 07 | Coffee, tea, cocoa, spices, and manufactures thereof | 96 | 83 | 100 | 0.6 | 726 |
| 08 | Feeding stuff for animals (excl. unmilled cereals) | 56 | 49 | 54 | 0.3 | 364 |
| 09 | Miscellaneous edible products and preparations | 150 | 97 | 139 | 0.8 | 1 056 |
| | <i>Total Food and live animals</i> | 770 | 628 | 755 | 4.4 | 5 656 |
| 1 | Beverages and tobacco | | | | | |
| 11 | Beverages | 116 | 92 | 115 | 0.7 | 1 025 |
| 12 | Tobacco and tobacco manufactures | 15 | 17 | 30 | 0.2 | 135 |
| | <i>Total Beverages and tobacco</i> | 130 | 110 | 145 | 0.8 | 1 161 |
| 2 | Crude materials, inedible, except fuels | | | | | |
| 21 | Hides, skins and furskins, raw | — | — | — | — | 2 |
| 22 | Oil seeds and oleaginous fruits | 4 | 4 | 4 | — | 42 |
| 23 | Crude rubber (incl. synthetic and reclaimed) | 13 | 9 | 11 | 0.1 | 131 |
| 24 | Cork and wood | 49 | 50 | 48 | 0.3 | 494 |
| 25 | Pulp and waste paper | 13 | 22 | 20 | 0.1 | 222 |
| 26 | Textile fibres and their wastes (not manufactured into yarn or fabric) | 9 | 10 | 11 | 0.1 | 104 |
| 27 | Crude fertilisers (excl. those of Division 56) and crude minerals (excl. coal, petroleum and precious stones) | 27 | 6 | 16 | 0.1 | 175 |
| 28 | Metalliferous ores and metal scrap | 99 | 5 | 19 | 0.1 | 452 |
| 29 | Crude animal and vegetable materials, n.e.s. | 38 | 31 | 30 | 0.2 | 229 |
| | <i>Total Crude materials, inedible, except fuels</i> | 251 | 138 | 158 | 0.9 | 1 851 |
| 3 | Mineral fuels, lubricants and related materials | | | | | |
| 32 | Coal, coke and briquettes | 4 | 1 | 1 | — | 11 |
| 33 | Petroleum, petroleum products and related materials | 1 584 | 1 757 | 1 622 | 9.4 | 20 603 |
| 34 | Gas, natural and manufactured | 423 | 256 | 231 | 1.3 | 823 |
| | <i>Total Mineral fuels, lubricants and related materials</i> | 2 011 | 2 014 | 1 854 | 10.7 | 21 437 |

— nil or rounded to zero (including null cells)

(a) Some SITC sections and divisions exclude commodities subject to a confidentiality restriction. These are included in Division 98. For more information see paragraph 17 of the Explanatory Notes.

(b) Per cent of total merchandise is calculated for the most recent month.

(c) The 'Major commodities' section lists commodities at the SITC Rev 4 3-digit level which are the most significant (by value) or are of particular interest. Abbreviated descriptors have been used. The list of 'Major commodities' is reviewed annually.

| | Jan | Feb | Mar | Per cent | 9 MONTHS | |
|----------------------------------|--|-------|-------|-------------|-------------|---------------|
| | 2009 | 2009 | 2009 | of total | ENDED MARCH | |
| | \$m | \$m | \$m | merchandise | 2008 | 2009 |
| | | | | imports(b) | | |
| | | | | % | \$m | \$m |
| SECTION AND DIVISION OF THE SITC | | | | | | |
| 4 | Animal and vegetable oils, fats and waxes | | | | | |
| 41 | Animal oils and fats | 2 | 1 | 2 | — | 26 29 |
| 42 | Fixed vegetable fats and oils, crude, refined or fractionated | 42 | 35 | 42 | 0.2 | 339 408 |
| 43 | Fats and oils (processed), waxes and inedible mixtures or preparations, of animal or vegetable origin, n.e.s. | 5 | 4 | 5 | — | 40 51 |
| | <i>Total Animal and vegetable oils, fats and waxes</i> | 49 | 40 | 49 | 0.3 | 405 488 |
| 5 | Chemicals and related products, n.e.s. | | | | | |
| 51 | Organic chemicals | 316 | 314 | 227 | 1.3 | 2 558 2 657 |
| 52 | Inorganic chemicals | 160 | 123 | 132 | 0.8 | 878 1 594 |
| 53 | Dyeing, tanning and colouring materials | 65 | 48 | 52 | 0.3 | 474 551 |
| 54 | Medicinal and pharmaceutical products | 727 | 714 | 908 | 5.2 | 5 899 6 634 |
| 55 | Essential oils and resinoids and perfume materials; toilet, polishing and cleansing preparations | 146 | 132 | 175 | 1.0 | 1 238 1 380 |
| 56 | Fertilisers (excl. crude) | 54 | 119 | 132 | 0.8 | 834 1 378 |
| 57 | Plastics in primary forms | 113 | 110 | 125 | 0.7 | 1 311 1 308 |
| 58 | Plastics in non-primary forms | 119 | 97 | 118 | 0.7 | 982 1 115 |
| 59 | Chemical materials and products, n.e.s. | 188 | 159 | 170 | 1.0 | 1 387 1 684 |
| | <i>Total Chemicals and related products, n.e.s.</i> | 1 887 | 1 816 | 2 038 | 11.8 | 15 560 18 301 |
| 6 | Manufactured goods classified chiefly by material | | | | | |
| 61 | Leather, leather manufactures, and dressed furskins, n.e.s. | 14 | 11 | 13 | 0.1 | 135 133 |
| 62 | Rubber manufactures, n.e.s. | 211 | 201 | 233 | 1.3 | 1 843 2 076 |
| 63 | Cork and wood manufactures (excl. furniture) | 72 | 61 | 60 | 0.3 | 506 556 |
| 64 | Paper, paperboard, and articles of paper pulp, of paper or of paperboard | 243 | 208 | 230 | 1.3 | 2 068 2 273 |
| 65 | Textile yarn, fabrics, made-up articles, n.e.s., and related products | 210 | 191 | 221 | 1.3 | 1 904 2 027 |
| 66 | Non-metallic mineral manufactures, n.e.s. | 226 | 210 | 255 | 1.5 | 1 839 2 195 |
| 67 | Iron and steel | 502 | 420 | 341 | 2.0 | 2 673 4 702 |
| 68 | Non-ferrous metals | 160 | 153 | 159 | 0.9 | 1 530 1 618 |
| 69 | Manufactures of metals, n.e.s. | 461 | 404 | 461 | 2.7 | 3 607 4 509 |
| | <i>Total Manufactured goods classified chiefly by material</i> | 2 097 | 1 859 | 1 972 | 11.4 | 16 105 20 089 |
| 7 | Machinery and transport equipment | | | | | |
| 71 | Power generating machinery and equipment | 445 | 443 | 497 | 2.9 | 3 270 4 220 |
| 72 | Machinery specialised for particular industries | 705 | 522 | 588 | 3.4 | 5 834 6 359 |
| 73 | Metal working machinery | 55 | 45 | 82 | 0.5 | 582 602 |
| 74 | General industrial machinery and equipment, n.e.s. and machine parts, n.e.s. | 992 | 839 | 1 231 | 7.1 | 7 346 9 229 |
| 75 | Office machines and automatic data processing machines | 669 | 581 | 795 | 4.6 | 6 432 6 832 |
| 76 | Telecommunications and sound recording and reproducing apparatus and equipment | 755 | 786 | 953 | 5.5 | 8 481 8 736 |
| 77 | Electrical machinery, apparatus, appliances, parts (incl. non-elec. counterparts of electrical domestic equip) | 808 | 699 | 904 | 5.2 | 6 716 7 788 |
| 78 | Road vehicles (incl. air-cushion vehicles) | 1 473 | 1 153 | 1 410 | 8.1 | 19 058 17 005 |
| 79 | Transport equipment (excl. road vehicles) | 217 | 183 | 159 | 0.9 | 3 789 3 012 |
| | <i>Total Machinery and transport equipment</i> | 6 119 | 5 253 | 6 619 | 38.2 | 61 508 63 784 |

— nil or rounded to zero (including null cells)

(b) Per cent of total merchandise is calculated for the most recent month.

(a) Some SITC sections and divisions exclude commodities subject to a confidentiality restriction. These are included in Division 98. For more information see paragraph 17 of the Explanatory Notes.

| | | | | Per cent of total merchandise imports(b) | 9 MONTHS ENDED MARCH | | |
|----------------------------------|---|---------------|---------------|---|-------------------------|----------------|----------------|
| | Jan | Feb | Mar | | | | |
| | 2009 | 2009 | 2009 | | 2008 | 2009 | |
| | \$m | \$m | \$m | % | \$m | \$m | |
| SECTION AND DIVISION OF THE SITC | | | | | | | |
| 8 | Miscellaneous manufactured articles | | | | | | |
| 81 | Prefabricated buildings; sanitary, plumbing, heating and lighting fixtures and fittings, n.e.s. | | | | | | |
| | 66 | 53 | 63 | 0.4 | 529 | 638 | |
| 82 | Furniture, parts thereof; bedding, mattresses, mattress supports, cushions and similar stuffed furnishings | | | | | | |
| | 234 | 169 | 203 | 1.2 | 1 968 | 2 225 | |
| 83 | Travel goods, handbags and similar containers | | | | | | |
| | 69 | 55 | 59 | 0.3 | 532 | 657 | |
| 84 | Articles of apparel and clothing accessories | | | | | | |
| | 601 | 483 | 517 | 3.0 | 3 522 | 4 348 | |
| 85 | Footwear | | | | | | |
| | 158 | 121 | 125 | 0.7 | 945 | 1 142 | |
| 87 | Professional, scientific and controlling instruments and apparatus, n.e.s. | | | | | | |
| | 375 | 377 | 452 | 2.6 | 3 233 | 3 782 | |
| 88 | Photographic apparatus, equipment and supplies and optical goods, n.e.s.; watches and clocks | | | | | | |
| | 126 | 115 | 128 | 0.7 | 1 030 | 1 167 | |
| 89 | Miscellaneous manufactured articles, n.e.s. | | | | | | |
| | 791 | 690 | 883 | 5.1 | 7 311 | 8 669 | |
| | <i>Total Miscellaneous manufactured articles</i> | <i>2 421</i> | <i>2 064</i> | <i>2 429</i> | <i>14.0</i> | <i>19 071</i> | <i>22 628</i> |
| 9 | Commodities and transactions not classified elsewhere in the SITC | | | | | | |
| 93 | Special transactions and commodities not classified according to kind | | | | | | |
| | 5 | 9 | 6 | — | 32 | 45 | |
| 95 | Gold coin whether or not legal tender, and other coin being legal tender | | | | | | |
| | — | — | 1 | — | 4 | 4 | |
| 96 | Coin (excl. gold coin), not being legal tender | | | | | | |
| | — | — | — | — | — | 1 | |
| 97 | Gold, non-monetary (excl. gold ores and concentrates) | | | | | | |
| | 1 004 | 1 768 | 1 127 | 6.5 | 5 206 | 9 615 | |
| 98 | Combined confidential items excl some of SITC 280 (exports only) and some of SITCs 510 and 520 (imports only) | | | | | | |
| | 419 | 852 | 166 | 1.0 | 405 | 3 576 | |
| | <i>Total Commodities and transactions not classified elsewhere in the SITC</i> | <i>1 428</i> | <i>2 630</i> | <i>1 300</i> | <i>7.5</i> | <i>5 647</i> | <i>13 242</i> |
| | Total merchandise imports | 17 164 | 16 551 | 17 318 | 100.0 | 148 401 | 172 881 |
| | Balance of Payments Adjustment | 429 | 322 | 336 | .. | 2 318 | 2 978 |
| | Goods Debits (imports) on a Balance of Payments Basis | 17 593 | 16 873 | 17 654 | .. | 150 719 | 175 859 |

.. not applicable
— nil or rounded to zero (including null cells)

- (a) Some SITC sections and divisions exclude commodities subject to a confidentiality restriction. These are included in Division 98. For more information see paragraph 17 of the Explanatory Notes.
(b) Per cent of total merchandise is calculated for the most recent month.

| | EXPORTS | | | | IMPORTS (b) | | | | BALANCE OF MERCHANDISE TRADE | |
|---------------------------|----------------|---------------|------------------------------------|------------------------------------|----------------|---------------|------------------------------------|------------------------------------|------------------------------------|------------------------------------|
| | 2007-08 | Mar 2009 | 9 months ended March 2008 | 9 months ended March 2009 | 2007-08 | Mar 2009 | 9 Months Ended March 2008 | 9 Months Ended March 2009 | 2007-08 | 9 Months Ended March 2009 |
| | \$m | \$m | \$m | \$m | \$m | \$m | \$m | \$m | | |
| Belgium | 1 327 | 63 | 958 | 1 157 | 1 727 | 138 | 1 262 | 1 402 | -400 | -246 |
| Brazil | 936 | 117 | 660 | 1 312 | 1 041 | 54 | 728 | 912 | -105 | 401 |
| Canada | 1 620 | 124 | 1 216 | 1 188 | 2 187 | 167 | 1 646 | 2 040 | -567 | -852 |
| China | 27 034 | 4 352 | 18 800 | 28 704 | 30 994 | 2 962 | 23 293 | 28 936 | -3 960 | -232 |
| Denmark | 177 | 15 | 126 | 135 | 895 | 100 | 641 | 840 | -718 | -706 |
| Egypt(c) | 310 | 51 | 231 | 312 | 17 | 2 | 14 | 27 | 292 | 285 |
| Fiji | 380 | 33 | 281 | 299 | 122 | 13 | 90 | 121 | 258 | 179 |
| Finland | 1 138 | 34 | 785 | 530 | 945 | 70 | 683 | 788 | 194 | -258 |
| France | 1 500 | 106 | 1 033 | 1 366 | 4 989 | 425 | 3 631 | 3 747 | -3 488 | -2 380 |
| Germany | 1 450 | 153 | 1 006 | 1 786 | 10 576 | 916 | 7 726 | 8 650 | -9 126 | -6 864 |
| Hong Kong (Sar of China) | 2 838 | 297 | 2 125 | 2 420 | 1 380 | 105 | 1 077 | 1 129 | 1 458 | 1 291 |
| India | 9 328 | 1 129 | 6 604 | 11 313 | 1 606 | 215 | 1 187 | 1 597 | 7 722 | 9 716 |
| Indonesia | 3 957 | 389 | 2 891 | 3 236 | 4 585 | 385 | 3 359 | 3 898 | -629 | -661 |
| Iran | 164 | 125 | 135 | 462 | 54 | 2 | 30 | 87 | 110 | 376 |
| Iraq | 94 | 1 | 9 | 101 | 23 | — | 23 | 31 | 71 | 70 |
| Ireland | 241 | 11 | 180 | 106 | 2 006 | 203 | 1 492 | 1 768 | -1 764 | -1 661 |
| Israel | 254 | 25 | 161 | 208 | 685 | 46 | 441 | 590 | -431 | -381 |
| Italy | 1 456 | 123 | 1 092 | 1 368 | 4 895 | 407 | 3 664 | 4 139 | -3 439 | -2 771 |
| Japan | 34 967 | 3 868 | 24 057 | 44 160 | 19 679 | 1 543 | 14 484 | 13 844 | 15 288 | 30 316 |
| Korea, Republic of | 14 240 | 1 506 | 10 164 | 15 558 | 6 163 | 580 | 4 622 | 4 819 | 8 076 | 10 739 |
| Kuwait | 577 | 40 | 424 | 342 | 363 | 32 | 213 | 348 | 213 | -6 |
| Malaysia | 3 426 | 249 | 2 471 | 2 890 | 8 081 | 529 | 6 092 | 6 570 | -4 656 | -3 680 |
| Mexico | 551 | 77 | 410 | 689 | 1 238 | 137 | 876 | 1 047 | -687 | -358 |
| Netherlands | 2 864 | 198 | 1 999 | 2 835 | 1 555 | 140 | 1 115 | 1 396 | 1 309 | 1 439 |
| New Zealand | 9 529 | 764 | 7 088 | 6 738 | 7 044 | 556 | 5 183 | 5 505 | 2 485 | 1 233 |
| Pakistan | 491 | 23 | 405 | 302 | 154 | 19 | 116 | 138 | 336 | 164 |
| Papua New Guinea | 1 616 | 126 | 1 167 | 1 192 | 2 748 | 284 | 2 056 | 2 350 | -1 132 | -1 158 |
| Philippines | 1 280 | 64 | 957 | 1 144 | 763 | 37 | 575 | 469 | 517 | 675 |
| Saudi Arabia | 2 247 | 290 | 1 651 | 1 892 | 908 | 40 | 677 | 722 | 1 339 | 1 170 |
| Singapore | 5 226 | 466 | 3 575 | 4 193 | 13 685 | 1 105 | 9 051 | 11 308 | -8 459 | -7 115 |
| South Africa | 2 408 | 124 | 1 894 | 1 722 | 1 497 | 69 | 1 080 | 1 028 | 911 | 694 |
| Spain | 902 | 41 | 608 | 542 | 1 996 | 126 | 1 437 | 1 378 | -1 094 | -836 |
| Sweden | 445 | 14 | 277 | 477 | 2 461 | 262 | 1 811 | 1 924 | -2 015 | -1 448 |
| Switzerland | 944 | 41 | 809 | 396 | 2 129 | 194 | 1 546 | 1 863 | -1 186 | -1 467 |
| Taiwan | 6 479 | 603 | 4 484 | 6 513 | 4 127 | 308 | 3 145 | 3 373 | 2 352 | 3 140 |
| Thailand | 4 645 | 461 | 3 133 | 3 774 | 8 846 | 903 | 6 490 | 8 668 | -4 201 | -4 894 |
| Turkey | 655 | 76 | 473 | 730 | 404 | 46 | 293 | 398 | 251 | 332 |
| United Arab Emirates | 3 133 | 128 | 2 201 | 3 074 | 2 542 | 69 | 1 796 | 1 337 | 591 | 1 737 |
| United Kingdom | 8 309 | 1 850 | 6 560 | 10 107 | 8 498 | 570 | 6 087 | 7 285 | -189 | 2 822 |
| United States of America | 10 602 | 913 | 7 683 | 9 405 | 24 325 | 2 191 | 18 098 | 19 836 | -13 723 | -10 431 |
| Viet Nam | 1 814 | 144 | 1 392 | 889 | 5 133 | 298 | 3 854 | 3 527 | -3 319 | -2 638 |
| Other Countries(b) | 9 305 | 788 | 6 437 | 8 085 | 9 241 | 1 072 | 6 717 | 13 048 | 64 | -4 963 |
| Total | 180 857 | 20 002 | 128 612 | 183 655 | 202 307 | 17 318 | 148 401 | 172 881 | -21 451 | 10 774 |
| APEC | 131 015 | 14 463 | 92 384 | 133 798 | 143 827 | 12 290 | 106 010 | 119 922 | -12 812 | 13 877 |
| ASEAN | 20 471 | 1 787 | 14 518 | 16 234 | 42 219 | 3 306 | 30 369 | 35 384 | -21 747 | -19 150 |
| Developing Countries | 95 171 | 11 152 | 67 200 | 95 149 | 97 810 | 8 275 | 71 691 | 84 581 | -2 638 | 10 568 |
| Least Developed Countries | 1 637 | 224 | 1 149 | 1 591 | 243 | 26 | 189 | 177 | 1 394 | 1 415 |
| European Union(d) | 20 462 | 2 649 | 15 100 | 20 787 | 43 226 | 3 597 | 31 517 | 35 802 | -22 764 | -15 015 |
| OECD | 93 496 | 10 015 | 66 906 | 99 558 | 107 367 | 9 126 | 79 027 | 86 047 | -13 871 | 13 511 |

— nil or rounded to zero (including null cells)

(a) See Time series spreadsheets for details of all countries.

(b) From September 2008 imports data with confidentiality restrictions 'no commodity details' or 'no value details' are included in Other countries.

(c) Exports of Alumina to Egypt are excluded from country total and included in the 'Other Countries' category.

(d) The European Union includes 27 member countries.

| | 9 MONTHS ENDED MARCH | | | |
|--|-------------------------|---------------|----------------|----------------|
| | 2007-08 | Mar 2009 | 2008 | 2009 |
| | \$m | \$m | \$m | \$m |
| EXPORTS (a) | | | | |
| New South Wales | 30 091 | 3 321 | 21 770 | 30 689 |
| Victoria | 20 539 | 1 804 | 15 213 | 15 991 |
| Queensland | 35 318 | 4 198 | 23 927 | 45 548 |
| South Australia | 10 338 | 807 | 7 453 | 7 402 |
| Western Australia | 68 843 | 8 261 | 48 892 | 69 437 |
| Tasmania | 3 635 | 294 | 2 622 | 2 636 |
| Northern Territory | 4 544 | 520 | 3 134 | 5 088 |
| Australian Capital Territory | 4 | 4 | 4 | 10 |
| State not available for publication(b) | 895 | 50 | 643 | 689 |
| Re-exports | 6 650 | 742 | 4 954 | 6 165 |
| Total | 180 857 | 20 002 | 128 612 | 183 655 |
| IMPORTS | | | | |
| New South Wales | 75 906 | 6 658 | 56 426 | 61 294 |
| Victoria | 56 058 | 4 359 | 41 364 | 44 769 |
| Queensland | 32 360 | 2 187 | 23 463 | 26 890 |
| South Australia | 7 342 | 567 | 5 335 | 5 502 |
| Western Australia | 27 355 | 2 937 | 19 510 | 26 669 |
| Tasmania | 691 | 48 | 491 | 758 |
| Northern Territory | 2 581 | 395 | 1 803 | 3 530 |
| Australian Capital Territory | 14 | 1 | 9 | 6 |
| State not available for publication(c) | — | 166 | — | 3 462 |
| Total | 202 307 | 17 318 | 148 401 | 172 881 |

— nil or rounded to zero (including null cells)

(a) State in which the final stage of production or manufacture occurs.

(b) Exports of Alumina to Bahrain, Egypt and Iceland are excluded from the state totals and included in 'State not available for publication'.

(c) From September 2008 imports data with confidentiality restrictions 'no commodity details' or 'no value details' are included in State not available for publication.

PERIOD AVERAGE EXCHANGE RATES (a): Per Australian dollar

| <i>Period</i> | <i>United States dollar</i> | <i>UK pound sterling</i> | <i>Euro</i> | <i>Japanese yen</i> | <i>Trade-weighted index of value of the A\$(b)</i> |
|----------------|-----------------------------|--------------------------|-------------|---------------------|--|
| FINANCIAL YEAR | | | | | |
| 2005-06 | 0.7474 | 0.4205 | 0.6143 | 85.90 | 63.3 |
| 2006-07 | 0.7863 | 0.4066 | 0.6018 | 93.21 | 64.8 |
| 2007-08 | 0.8968 | 0.4479 | 0.6099 | 98.63 | 69.7 |
| MONTHS | | | | | |
| 2008 | | | | | |
| January | 0.8815 | 0.4479 | 0.5993 | 95.16 | 68.2 |
| February | 0.9128 | 0.4647 | 0.6192 | 97.84 | 70.2 |
| March | 0.9260 | 0.4622 | 0.5964 | 93.36 | 69.8 |
| April | 0.9298 | 0.4695 | 0.5899 | 95.30 | 70.0 |
| May | 0.9491 | 0.4828 | 0.6098 | 98.90 | 72.2 |
| June | 0.9508 | 0.4840 | 0.6116 | 101.75 | 72.8 |
| July | 0.9625 | 0.4840 | 0.6102 | 102.71 | 73.3 |
| August | 0.8810 | 0.4668 | 0.5890 | 96.33 | 68.6 |
| September | 0.8205 | 0.4558 | 0.5700 | 87.49 | 64.9 |
| October | 0.6894 | 0.4070 | 0.5173 | 69.20 | 56.1 |
| November | 0.6557 | 0.4279 | 0.5155 | 63.55 | 54.4 |
| December | 0.6690 | 0.4480 | 0.4973 | 61.02 | 54.6 |
| 2009 | | | | | |
| January | 0.6784 | 0.4678 | 0.5095 | 61.37 | 55.4 |
| February | 0.6490 | 0.4503 | 0.5074 | 59.97 | 54.2 |
| March | 0.6646 | 0.4680 | 0.5093 | 64.92 | 56.0 |

- (a) These exchange rates and the trade-weighted index are derived using rates provided by the Reserve Bank of Australia in respect of each trading day.
- (b) May 1970 = 100. The Trade-weighted index is reweighted annually on 1 October and on special occasions as required.

EXPLANATORY NOTES

INTRODUCTION

1 This publication presents preliminary estimates of Australia's international trade in goods and services on a balance of payments basis and merchandise import and export statistics on a recorded trade basis.

2 Merchandise trade statistics on a recorded trade basis are compiled from information submitted by exporters and importers or their agents to the Australian Customs Service (ACS). Adjustments for coverage, timing and valuation are made to recorded trade data to convert them to a balance of payments basis. The main source for services data is the quarterly Survey of International Trade in Services.

3 More comprehensive quarterly estimates of Australia's trade in goods and services, together with comprehensive details of Australia's balance of payments are included in the quarterly publication, *Balance of Payments and International Investment Position, Australia* (cat. no. 5302.0). Detailed monthly statistics on merchandise trade are available on Time Series Spreadsheets or by subscription to tailored services.

CONCEPTS, SOURCES AND METHODS

4 The conceptual framework used in compiling Australia's merchandise trade statistics can be found in *International Merchandise Trade, Australia: Concepts, Sources and Methods, 2001* (cat. no. 5489.0).

5 The conceptual framework used in compiling Australia's balance of payments statistics is based on the Fifth Edition of the International Monetary Fund's *Balance of Payments Manual* (BPM5,1993). Descriptions of the underlying concepts and structure of the balance of payments and the sources, methods and terms used in compiling the estimates are presented in *Balance of Payments and International Investment Position, Australia: Concepts, Sources and Methods, 1998* (cat. no. 5331.0). To bring merchandise trade statistics on a recorded trade basis to a balance of payments basis, timing adjustments are made to ensure that the transaction is recorded in the period in which ownership changed, rather than in the period in which the transaction was recorded by ACS. Adjustments are also made to account for the change of ownership of goods not included in merchandise trade statistics. Chapter 6 of cat. no. 5331.0 provides more detail on the relationship between statistics on international merchandise trade on a recorded trade basis and on a balance of payments basis.

6 Both of the Concepts, Sources and Methods publications are available to download for free from the ABS website. Select *Methods, Classifications, Concepts & Standards*, then choose *ABS concepts, classifications and statistical standards* and then the catalogue numbers as above.

SEASONAL ADJUSTMENT

7 The estimates of international trade in goods and services on a balance of payments basis are seasonally adjusted, however the merchandise exports and imports statistics on a recorded trade basis are not. Monthly original estimates are volatile, being subject to calendar-related and large irregular influences. Seasonally adjusted estimates are derived by estimating and removing from the original series systematic calendar related effects, such as seasonal, trading day, length of month and moving holiday influences. Seasonal adjustment does not aim to remove the irregular or non-seasonal influences which may be present in any particular month. These irregular influences may reflect both random economic events and difficulties of statistical recording.

8 The seasonally adjusted statistics in this publication use the concurrent seasonal adjustment technique and Autoregressive Integrated Moving Average (ARIMA) Modelling to estimate factors for the current and previous months. Under concurrent seasonal adjustment, the estimates of seasonal factors are fine tuned as new original estimates become available each period. The seasonally adjusted estimates are subject to revisions at each reference month as the estimates of seasonal factors are improved. For more information on seasonal adjustment methods, see *Information Paper: An Introductory Course on Time Series Analysis, Jan 2005* (cat. no. 1346.0.55.001), *Time Series Analysis*

EXPLANATORY NOTES *continued*

SEASONAL ADJUSTMENT

continued

Frequently Asked Questions, 2003 (cat. no. 1346.0.55.002), alternatively contact the Assistant Director, Time Series Analysis on (02) 6252 6345 or e-mail <time.series.analysis@abs.gov.au>.

ARIMA MODELLING

9 ARIMA modelling relies on the characteristics of the series being analysed to project future period data. ARIMA modelling is used on a case-by-case basis where it results in reduced revisions to seasonally adjusted series when subsequent data become available. The projected values are temporary, intermediate values, that are only used internally to improve the estimation of the seasonal factors. The projected data do not affect the original estimates and are discarded at the end of the seasonal adjustment process. The ARIMA model is assessed as part of the annual reanalysis and, following the 2008 annual re-analysis, 41 of the 42 directly seasonally adjusted trade in goods and services time series use an ARIMA model. For more information on the details of ARIMA modelling see *Feature article: Use of ARIMA modelling to reduce revisions* in the October 2004 issue of *Australian Economic Indicators* (cat. no. 1350.0).

TREND ESTIMATES

10 The month-to-month movements of the seasonally adjusted estimates may not be reliable indicators of trend behaviour because they include irregular or non-seasonal movements. Trend estimates are derived by applying a 13-term Henderson moving average to the seasonally adjusted series. The use of a 13-term Henderson average can result in revisions to the estimates for the most recent six months as additional observations become available. Revisions can also occur because of changes in the original data and as a result of the re-estimation of the seasonal factors. For more information on trend estimates methods, see *Information Paper: A Guide to Interpreting Time Series—Monitoring Trends* (cat. no. 1349.0), alternatively contact the Assistant Director, Time Series Analysis on (02) 6252 6345 or e-mail <time.series.analysis@abs.gov.au>.

SIGN CONVENTION

11 In keeping with balance of payments conventions, where statistics are on a balance of payments basis, credit entries (exports) are shown without sign and debit items (imports) are shown as negative entries. For statistics on a recorded trade basis, both imports and exports are shown without sign. The calculation of percentage changes on balance of payments debit items are made without regard to sign. References to balance of payments debit items in Key Figures, Key Points, and Analysis and Comments are also made without regard to sign.

COMMODITY BREAKDOWNS OF GOODS

12 For details of the classifications used to present goods exports (credits) and imports (debits) on a balance of payments basis, see tables 6.6 and 6.7, respectively, in *Balance of Payments and International Investment Position, Australia: Concepts, Sources and Methods, 1998* (cat. no. 5331.0).

13 The correspondences used to compile statistics on a Balance of Payments basis were updated in the July 2008 issue with estimates for all time periods recomputed on the basis of the revised correspondences to maintain consistency in the time series.

14 The recorded trade statistics shown in tables 12 and 13 are classified by the Standard International Trade Classification (SITC). Imports and exports of goods at a more detailed level are available from the Time Series spreadsheets. All data from July 2005 are presented according to SITC Rev 4 and data prior to July 2005 are presented according to SITC Rev 3. For details refer to the July 2008 issue of this publication.

COMMODITY BREAKDOWNS OF SERVICES

15 The quarterly detailed services data published in table 11 are consistent with the monthly aggregates shown in table 9.

EXPLANATORY NOTES *continued*

COMMODITY BREAKDOWNS OF SERVICES *continued*

16 Monthly indicators for many of the services components that are only surveyed quarterly are not available. In particular, the Freight and Other transportation components of Total services credits are not available for publication on a monthly basis. The estimates for these items shown in table 9 are therefore derived by dividing the quarterly estimate by three. Where quarterly survey data are not available, freight debits are derived directly from imports data for the reference month as a difference between total merchandise cost, insurance and freight (CIF) and free on board (FOB), adjusted to reflect timing and processing adjustments. For freight credits and other transportation credits and debits, estimates are derived by extrapolating the last month's data by an average of movements for the same month over the three previous years.

CONFIDENTIALITY OF MERCHANDISE TRADE STATISTICS

17 The release of statistics for certain merchandise trade commodities is restricted in order to prevent the identification of the activities of an individual business, where this is requested by the business concerned. These restrictions do not affect the total value of exports and imports, but they can affect statistics at the country, state and commodity levels. Imports data that have the confidentiality restrictions 'No commodity details' or 'No value details' are aggregated into a single confidential commodity code. For data prior to September 2008, these data are added back into the appropriate state total and country total (i.e. these totals show the correct level of trade). From September 2008 these confidential data are not added back. Instead the confidential data are published as 'No country details' in the country totals and 'State not available for publication' in the state totals. Therefore, country and state totals from September 2008 may not represent the actual amount of trade in each country/state but only the trade in commodities without a 'No commodity details' or 'No value details' restriction. For information on the confidentiality restrictions applied to the merchandise trade statistics in this publication, refer to the current *International merchandise trade: Confidential Commodities List (CCL)* (cat. no. 5372.0.55.001) which can be accessed from ABS web site.

TOURISM RELATED SERVICES

18 The tourism related services memorandum items provide timely indicators of the movements in tourism related activities, not an absolute measure of the level of these activities. These series are not compiled on a balance of payments conceptual basis. However, they do provide a reasonable approximation of world tourism related activities.

19 The memorandum items have been derived by re-aggregating relevant components of the international trade in services series of the balance of payments accounts. The tourism related indicator has been derived by combining total travel services (business, education-related and other personal travel) and passenger transportation services (which includes agency fees and commission receipts for air transport).

SERVICES BY STATE AND BY PARTNER COUNTRY

20 Annual services data by state and by partner country are released twice yearly. Calendar year data are usually released with the March issue of this publication and financial year data are released with the September issue. Refer to Time series data for details.

21 Services credits are classified by the state of provision, while services debits are classified by the state of consumption. The state allocations for transportation, travel and communication services are based on a number of indicators including merchandise trade statistics by state, overseas passenger arrivals and departures by state of clearance and data provided by the Department of Education, Science and Training. The allocation for other services (about 25% of all trade in services) is primarily based on the location of the business reporting the information, which serves as a proxy for the state of provision/consumption of that service. The data should be used with care but are considered suitable for analysis over time.

EXPLANATORY NOTES *continued*

SERVICES BY STATE AND BY PARTNER COUNTRY *continued*

22 A comprehensive explanation of the data sources used and the methodology applied in the compilation of partner country statistics is provided in Chapter 17 of *Balance of Payments and International Investment Position, Australia – Concepts, Sources and Methods* (cat. no. 5331.0). Approximately 7% of total services credits and 5% of total services debits for both 2006–07 and 2007–08 are either confidential, or unable to be allocated to individual countries.

ABS DATA AVAILABLE

23 More detailed balance of payments and recorded merchandise trade data, including forward seasonal factors are available as time series spreadsheets or data cubes from the ABS website.

24 More detailed merchandise trade data by commodity, country and state, and statistics included in this and related publications are available on request. Inquiries should be made to the National Information and Referral Service as shown on the back of this publication.

RELATED PRODUCTS AND PUBLICATIONS

25 Users may also wish to refer to the following publications which can be downloaded free of charge from the ABS web site:

- *Balance of Payments and International Investment Position, Australia* (cat. no. 5302.0) – issued quarterly
- *International Merchandise Imports, Australia* (cat. no. 5439.0) – issued monthly
- *International Trade Price Indexes, Australia* (cat. no. 6457.0) – issued quarterly
- *Balance of Payments and International Investment Position, Australia: Concepts, Sources and Methods* (cat. no. 5331.0)
- *Information Paper: Quality of Australian Balance of Payments Statistics* (cat. no. 5342.0)
- *International Merchandise Trade, Australia: Concepts, Sources and Methods* (cat. no. 5489.0)
- *A Guide to Australian Balance of Payments and International Investment Position Statistics* (cat. no. 5362.0.55.001).

26 Current publications and other products released by the ABS are available from the *Statistics View*. The ABS also issues a daily *Release Advice* on the web site which details products to be released in the week ahead.

CAUTIONARY NOTE

27 The tables in this publication are presented on two bases. Tables 1–11 contain estimates of Australia's international trade in goods and services which have been adjusted for coverage, valuation and timing to a balance of payments basis. Tables 12–15 contain estimates of merchandise exports and imports based on Australian Customs Service records. Paragraph 5 of the Explanatory Notes provides an explanation of the difference between these bases.

ROUNDING

28 Where figures have been rounded, discrepancies may occur between sums of the component items and totals. Percentage movements are calculated from data at the level of precision presented in this publication (i.e. \$m) except for international merchandise trade tables.

EXPLANATORY NOTES *continued*

ABBREVIATIONS

| | |
|--------|--|
| \$b | billion (thousand million) dollars |
| \$m | million dollars |
| ABS | Australian Bureau of Statistics |
| APEC | Asia Pacific Economic Co-operation |
| ASEAN | Association of South-East Asian Nations |
| n.e.s. | not elsewhere specified |
| n.i.e. | not included elsewhere |
| OECD | Organisation for Economic Co-operation and Development |
| SAR | Special Administrative Region |
| SITC | Standard International Trade Classification |

APPENDIX RELATED ARTICLES

| <i>Article</i> | <i>Source(a)</i> | <i>Issue</i> |
|---|------------------|--------------|
| Investment | | |
| Foreign ownership of equity | 5302.0 | Sep qtr 2007 |
| Kangaroo bonds | 1301.0 | 2006 |
| Foreign currency exposure | 5308.0 | Mar qtr 2005 |
| Gross external debt | 5302.0 | Sep qtr 2003 |
| Balance of payments | | |
| International comparison of balance of payments statistics | (b)5363.0 | 1998-99 |
| Merchandise trade | | |
| Characteristics of Australian Exporters | 5368.0.55.006 | 2007-08 |
| Export and import invoice currencies, 2006 | 5368.0 | Dec 2007 |
| 100 years of international trade statistics | 5368.0 | Oct 2007 |
| New methodology for deriving counts of Australian exports | 5368.0 | Feb 2006 |
| Australia's Importers, 2003-04 | 5368.0 | Nov 2004 |
| Australia's Exporters, 2003-04 | 5368.0 | Oct 2004 |
| Australia's trade with the USA | 5368.0 | Mar 2004 |
| Foreign ownership of Australian exporters and importers | 5496.0.55.001 | 2002-2003 |
| Major commodities traded by Australia, 1991 to 2000 | (b)5422.0 | Dec qtr 2000 |
| Trade in services | | |
| International trade in services by partner country, 2006, preliminary | 5368.0 | Dec 2006 |
| Changes to International trade in services statistics, August 2006 | 5368.0 | Aug 2006 |
| Changes to International trade in services travel statistics | 5368.0 | Aug 2005 |
| Finance | | |
| Impact of the farm season on Australian production in 2002-03 and 2003-04 | 1301.0 | 2005 |
| Recent trends in construction and first home buyers finance | 5609.0 | Mar 2002 |
| Household sector data in the financial accounts | 5232.0 | Mar qtr 2002 |
| Technical information | | |
| Changes to International Trade in Goods Industry Statistics, July 2009 | 5368.0.55.011 | Dec 2008 |
| Technical note 1 - Income on debt | 5302.0 | Jun qtr 2008 |
| Technical note 2 - Use of CDI data | 5302.0 | Jun qtr 2008 |
| Impact of introducing Revision 4 of the Standard International Trade Classification | 5368.0.55.010 | 2008 |
| Changes to international trade statistics July 2008 | 5368.0.55.009 | 2007-2008 |
| Introduction of revised international standards in ABS economic statistics in 2009 | 5310.0.55.001 | 2007 |
| Changes on 1 January 2007 to Statistical Codes in the AHECC and the Customs Tariff | 1233.0.55.001 | Nov 2006 |
| ABS implementation in January 2007 of revisions to international trade classifications, 2007 | 5368.0.55.005 | June 2006 |
| Revised treatment of Goods for Processing in Merchandise Trade and Balance of Payments Statistics | 5368.0 | May 2006 |
| Impact of Customs and ABS changes on import statistics from October 2005 | 5439.0 | Oct 2005 |
| ABS management of the impact of the implementation of the imports component of the New Customs System | 5439.0 | Aug 2005 |
| Changes to country and port classifications | 5368.0 | May 2003 |
| Implementation of New Customs Systems | 5368.0 | Aug 2004 |
| The effect of customs changes on export statistics | 5422.0 | Jun qtr 2002 |
| Data confidentiality | 5422.0 | Dec qtr 1999 |

- (a) In the ABS web site home page, select Statistics; By Catalogue Number; and click on the specified catalogue number and issue. Note: in some instances, a particular issue of the publication can be found in the Past & Future Releases page of the catalogue.
- (b) This article can be found in pdf format by referring to the Downloads page of the specified issue of this publication on the ABS web site.

FOR MORE INFORMATION . . .

INTERNET **www.abs.gov.au** the ABS website is the best place for data from our publications and information about the ABS.

INFORMATION AND REFERRAL SERVICE

Our consultants can help you access the full range of information published by the ABS that is available free of charge from our website. Information tailored to your needs can also be requested as a 'user pays' service. Specialists are on hand to help you with analytical or methodological advice.

PHONE 1300 135 070

EMAIL client.services@abs.gov.au

FAX 1300 135 211

POST Client Services, ABS, GPO Box 796, Sydney NSW 2001

FREE ACCESS TO STATISTICS

All statistics on the ABS website can be downloaded free of charge.

WEB ADDRESS www.abs.gov.au